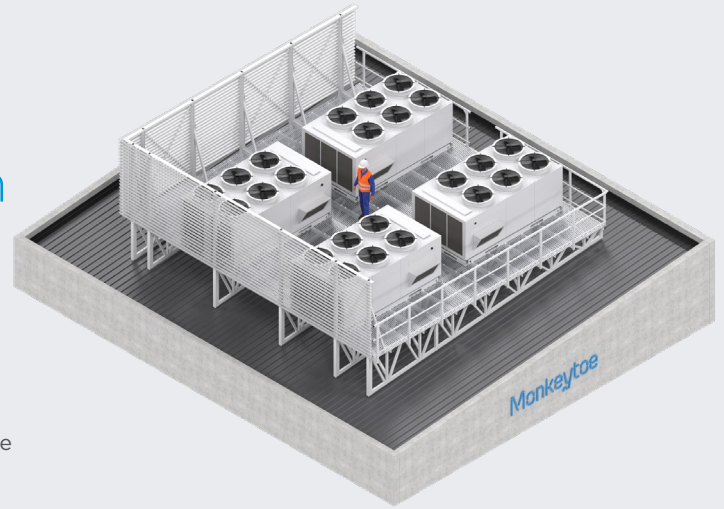


### PLATFORMS

## Monkeytoe Purlin-mount Plant Platform CODE: MPT6



#### PRODUCT DESCRIPTION

Monkeytoe mesh platform system ensures the simple effective installation and mounting of either a series of condenser units, large package units or any heavy duty equipment.

#### TYPICAL USES / APPLICATIONS

- Rooftop mounting for air conditioning units
- Hot water cylinder units
- Helicopter pads
- Industrial maintenance platforms
- Viewing decks
- Landings for roof area entry and exit
- Telecommunication service decks

#### CHARACTERISTICS / ADVANTAGES

- Lighter than steel structures

- Less impact than steel platforms on support structures
- Pre-engineered proprietary system
- Non-slip amplimesh surface
- Prefabricated modular componentry ensures fast onsite install
- No onsite welding / hot work requirements
- Support up to 5.0kPa
- Low maintenance and neat appearance
- Can be walked into position
- Modular design
- System uses the unique Monkeytoe mounting clips, non-penetrating tape down, or a combination of both where required

#### TECHNICAL DATA / MATERIALS

- High tensile structural T6 marine-grade aluminium
- Fixings: Stainless steel 304 grade
- Roof connections:
  - Roofing clip - High density polyethylene, UV resistant
  - Class 4 galvanised roofing jacking stud
  - Neoprene sealing washers
  - Tape down, non penetrating connection (In high wind zones or where screens more than 2m are required this may need to be accompanied by localized mechanical fixings.)

#### TESTS

#### APPROVALS / STANDARDS

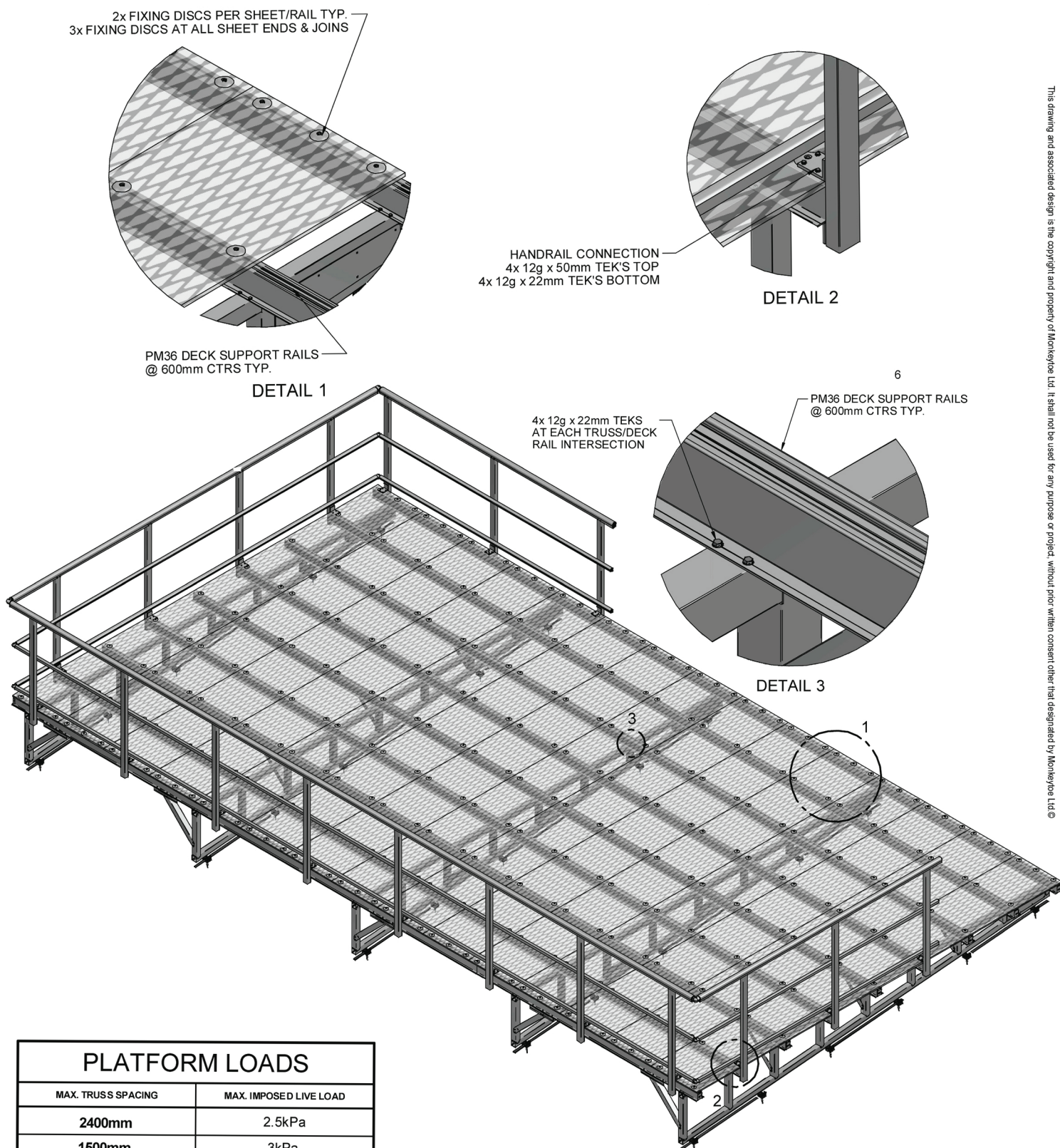
- Physical/practical load testing of roofing clips witnessed by independent engineers
- Physical in-situ acoustic testing conducted by Norman Disney & Young Consultants.
- Structural design certificate signed off by certified Australian engineer
- ABCB NCC 2019
- AS 1657
- AS/NZS 1170.0 General Principles
- AS/NZS 1170.1 Permanent, Imposed and other actions
- AS/NZS 1170.2 Wind Actions
- AS/NZS 1170.4 Earthquake actions in Australia

#### WARRANTY

- 15 years materials and 2 years install

#### MAINTENANCE

- It is recommended that plant platforms are included in the standard 'building warrant of fitness' inspections.



### PLATFORM LOADS

MAX. TRUSS SPACING	MAX. IMPOSED LIVE LOAD
2400mm	2.5kPa
1500mm	3kPa
1200mm	5kPa

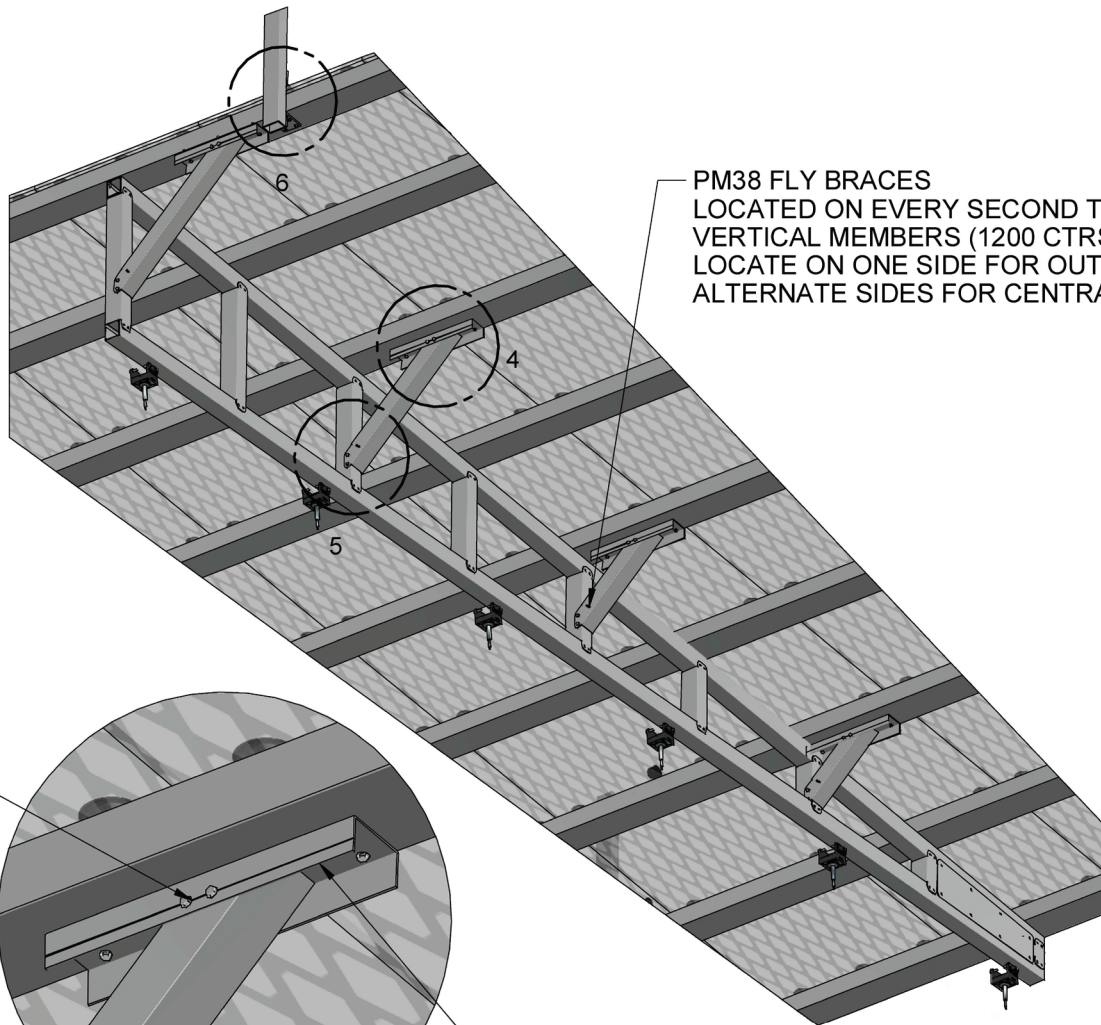
DRAWN BY:	LJK
MODELED BY:	LJK
CHECKED BY:	BP/BD/LK
DATE DRAWN:	06/12/2018
LAST SAVED:	20/07/2020
MATERIAL:	SEE B.O.M.
FINISH:	Mill
TOLERANCES:	+0,-2.0;0.1"

**Monkeytoe**

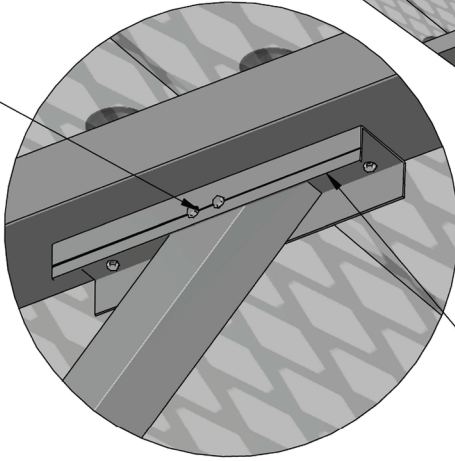
EVERYTHING BETTER  
0800 658 637 - [www.monkeytoe.co.nz](http://www.monkeytoe.co.nz)

MPT6 LIGHT WEIGHT PLATFORM ASSY		
MONKEYTOE		
DWG No: MP-OP-AS-4		2004
	SHEET 1 OF 3	A3
	SCALE: 1:30	REV:01
DO NOT SCALE	DIMENSIONS IN MILLIMETERS	





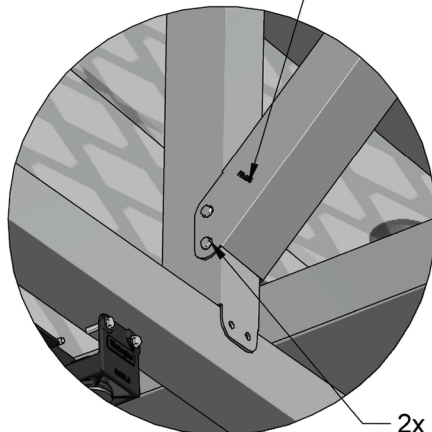
2x 12g TEK'S  
EACH SIDE



DETAIL 4

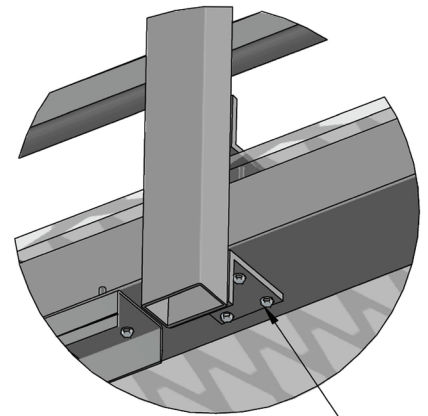
PM08 FLY BRACE  
ATTACHEMENT BRACKET,  
FIXED TO UNDERSIDE OF  
PM36 DECK RAIL WITH  
4x 12g TEK'S

PM38 FLY BRACE



DETAIL 5

2x 12g TEK'S  
EACH SIDE



DETAIL 6

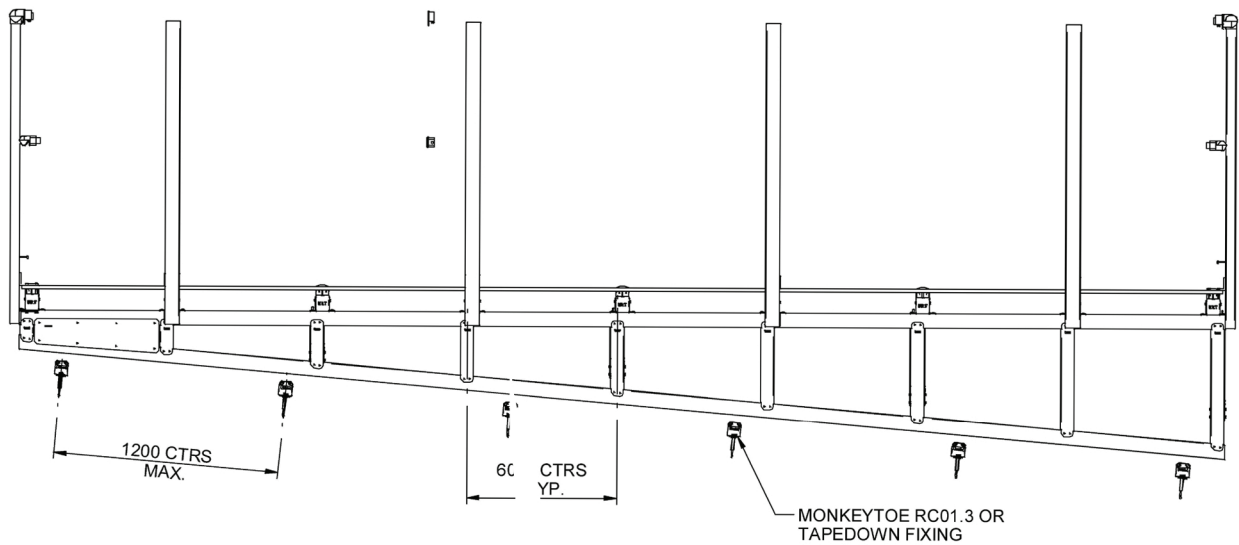
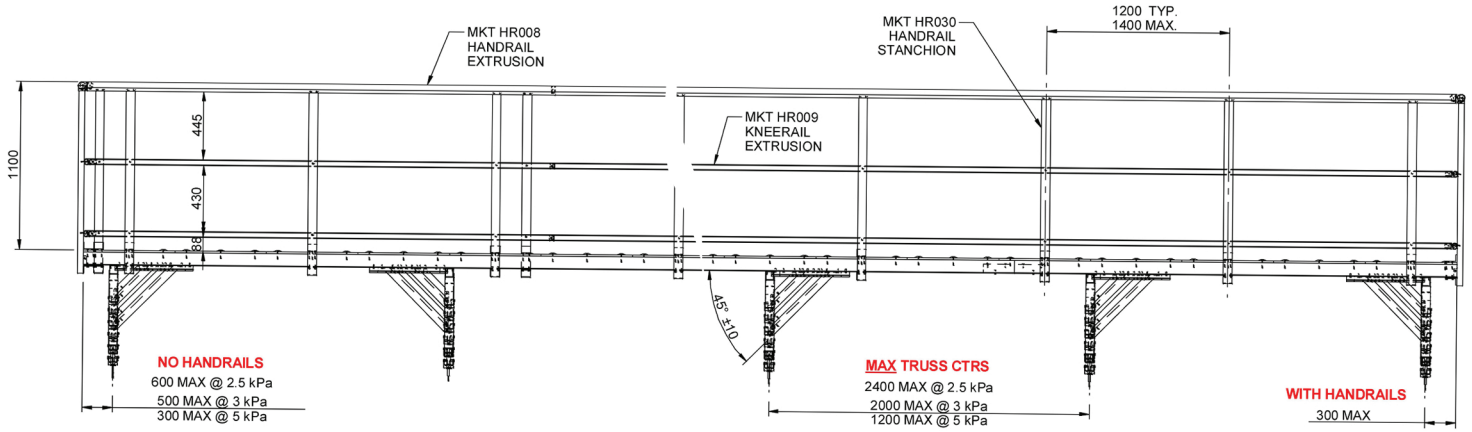
HANDRAIL CONNECTION  
4x 12g x 50mm TEK'S TOP  
4x 12g x 22mm TEK'S BOTTOM

DRAWN BY:	LJK
MODELED BY:	LJK
CHECKED BY:	BP/BD/LK
DATE DRAWN:	06/12/2018
LAST SAVED:	20/07/2020
MATERIAL:	SEE B.O.M.
FINISH:	Mill
TOLERANCES:	+0,-2.0;0.1"

**Monkeytoe**

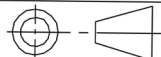
EVERYTHING BETTER  
0800 658 637 - [www.monkeytoe.co.nz](http://www.monkeytoe.co.nz)

MPT6 LIGHT WEIGHT PLATFORM ASSY		
MONKEYTOE		
DWG No: MP-OP-AS-4		<b>2004</b>
 DO NOT SCALE	SHEET 2 OF 3	<b>A3</b>
	SCALE: 1:50	REV:01
	DIMENSIONS IN MILLIMETERS	



DRAWN BY:	LJK
MODELED BY:	LJK
CHECKED BY:	BP/BD/LK
DATE DRAWN:	06/12/2018
LAST SAVED:	20/07/2020
MATERIAL:	SEE B.O.M.
FINISH:	Mill
TOLERANCES:	+0,-2.0;0.1°

**Monkeytoe**  
 EVERYTHING BETTER  
 0800 658 637 - [www.monkeytoe.co.nz](http://www.monkeytoe.co.nz)

MPT6 LIGHT WEIGHT PLATFORM ASSY		
MONKEYTOE		
DWG No: MP-OP-AS-4		<b>2004</b>
 DO NOT SCALE	SHEET 3 OF 3	A3
	SCALE: 1:25	REV:01
DIMENSIONS IN MILLIMETERS		