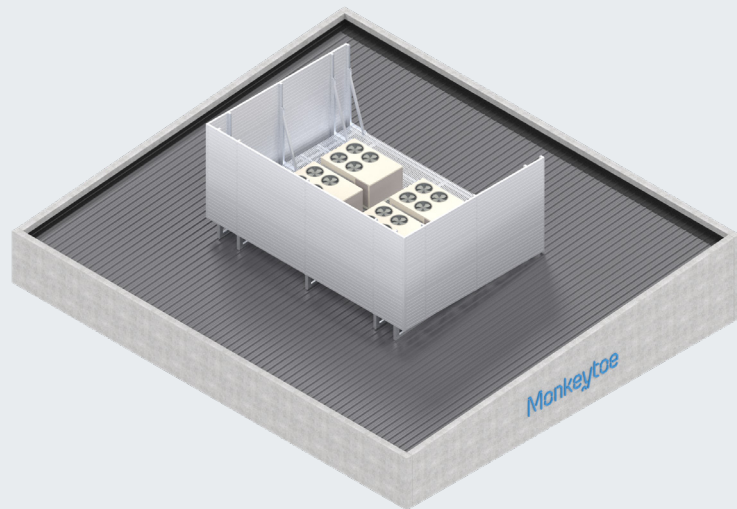


# HushMonkey - Absorptive Acoustic Screening



### PRODUCT DESCRIPTION

The HushMonkey Absorptive Acoustic Panel is an easy-to-install sound absorbing wall system that is innovative, functional and versatile.

### TYPICAL USES / APPLICATIONS

- Perfect for a wide range of industrial applications
- Equipment platform screening
- Plantrooms
- Machine enclosures
- Data centres
- Hospitals
- Generator/Compressor Enclosures
- Power Stations
- Factories/Warehouses
- Airports
- Outdoor sound control walls

### CHARACTERISTICS / ADVANTAGES

- Highly durable greenstar rated absorbing material with a minimum 60% recycled material content
- Extensively third party tested For acoustic performance and durability
- Efficient sound-absorbing material, specifically developed for noise reduction in external plant enclosures. This is the result of collaboration with Autex Acoustics and Monkeytoe.
- Additional options with higher performance available for specific applications
- Innovative, economical and straightforward installation system
- As Installed acoustic performance can be modelled very accurately with results of extensive field and laboratory testing.
- Easily adaptable and modular as requirements change
- Can be run vertical or horizontally for visual effect
- Pre engineered system configurable for all wind loads
- Highly rigid extrusion profile offers greater sound reduction than sheet type barriers

### TECHNICAL DATA / MATERIALS

- Materials - Facing: 254 x 40mm architectural marine-grade aluminium channel
- Surface weight - 12.5kg/m<sup>2</sup>
- Materials - Inner: Recycled polymer absorptive core
- Optional powder-coated exterior

### TESTS

#### APPROVALS / STANDARDS

- Structural design action B1 & B2
- AS/NZS 1170 Standards Australia / New Zealand (Relevant parts)

### WARRANTY

- 10 years product warranty

### MAINTENANCE

- It is recommended that plant platforms are included in the standard 'building warrant of fitness' inspections.
- All damage or loose fixings to be reported immediately to asset manager or building owner for correction.

SOUND MAPS

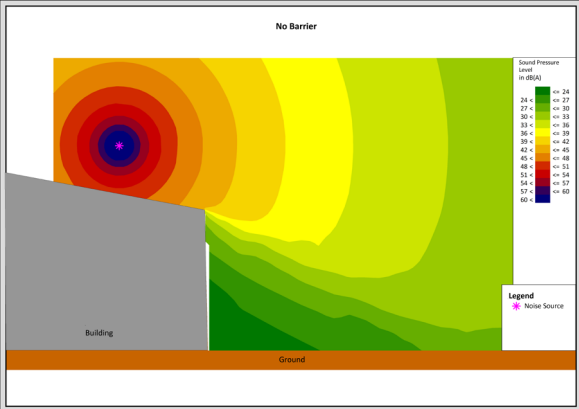


Fig.1 - No barrier

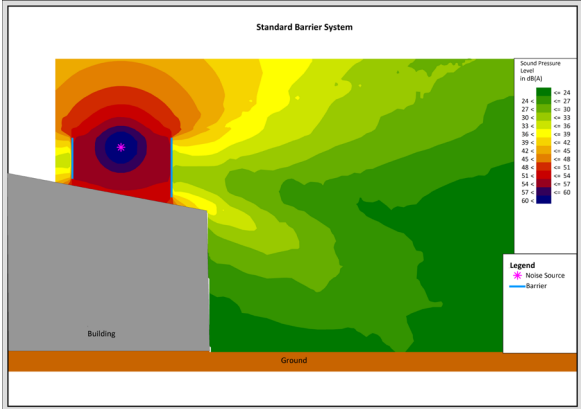


Fig.2 - Standard barrier

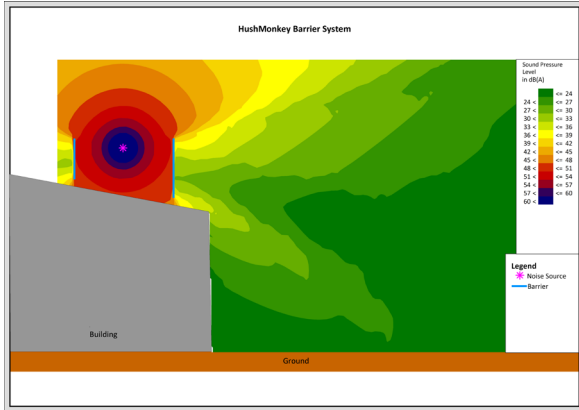


Fig.3 - HushMonkey barrier

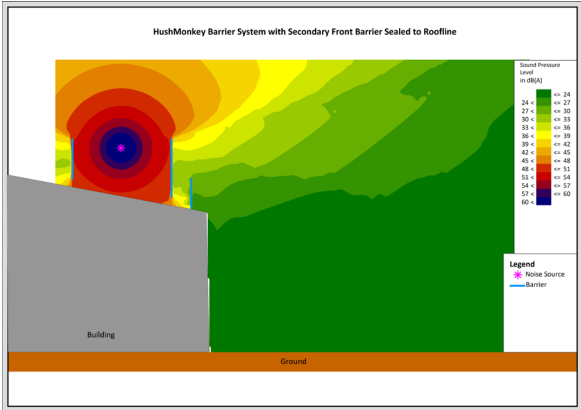
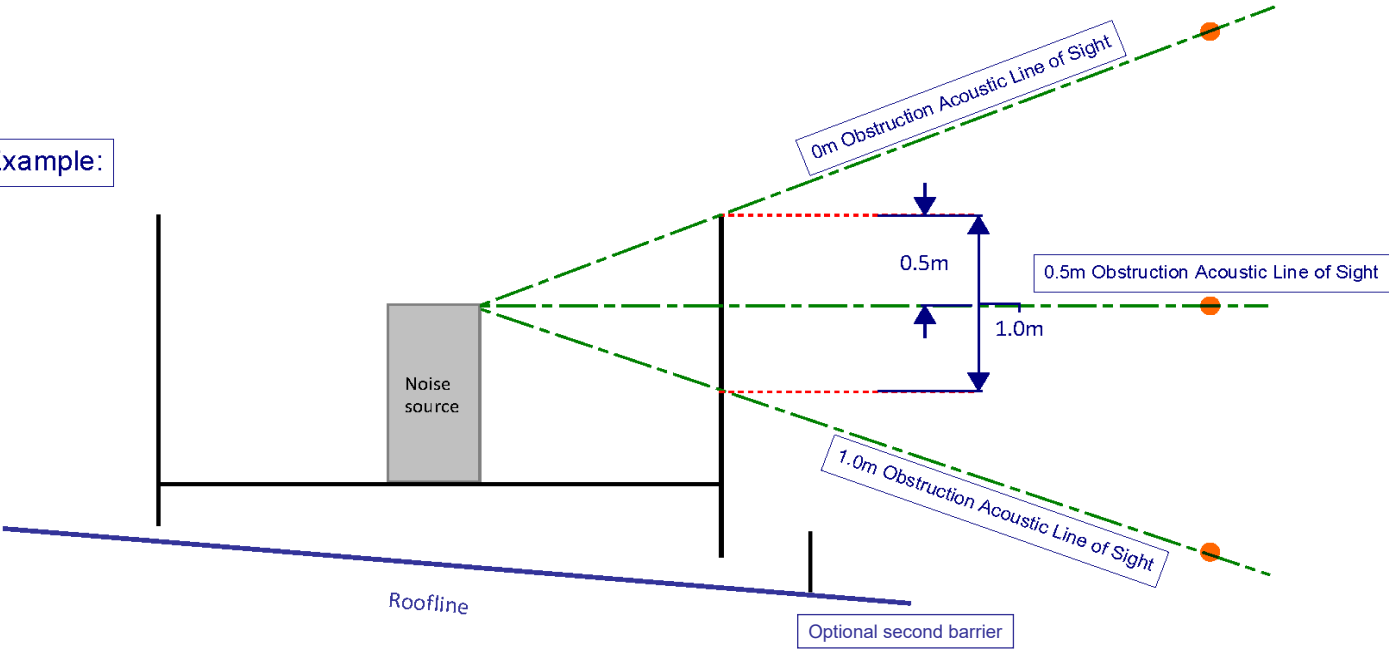


Fig.4 - HushMonkey barrier with second front barrier sealed to roofline to allow airflow

OBSTRUCTION DIAGRAMS

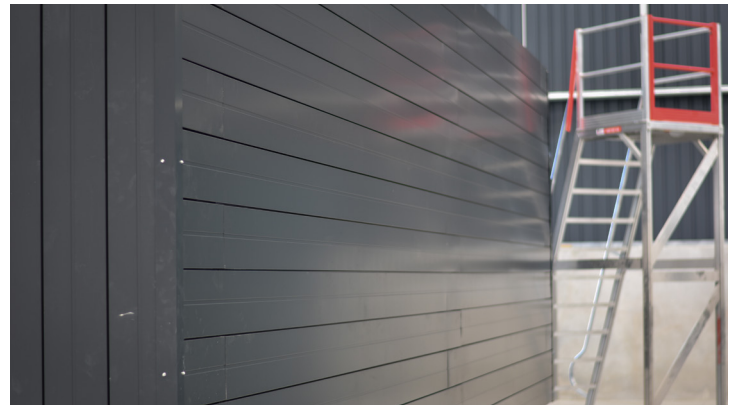
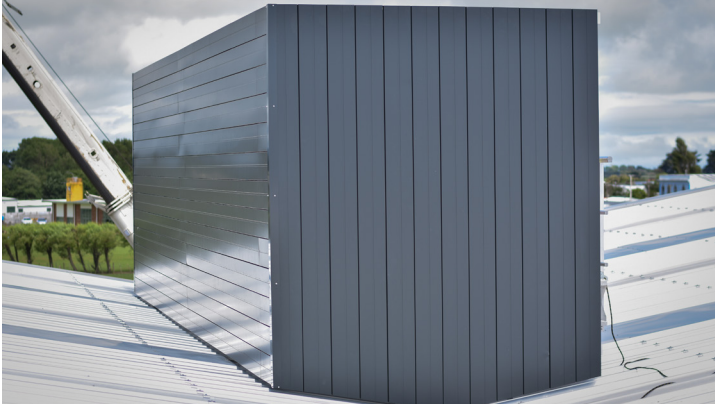
Example:



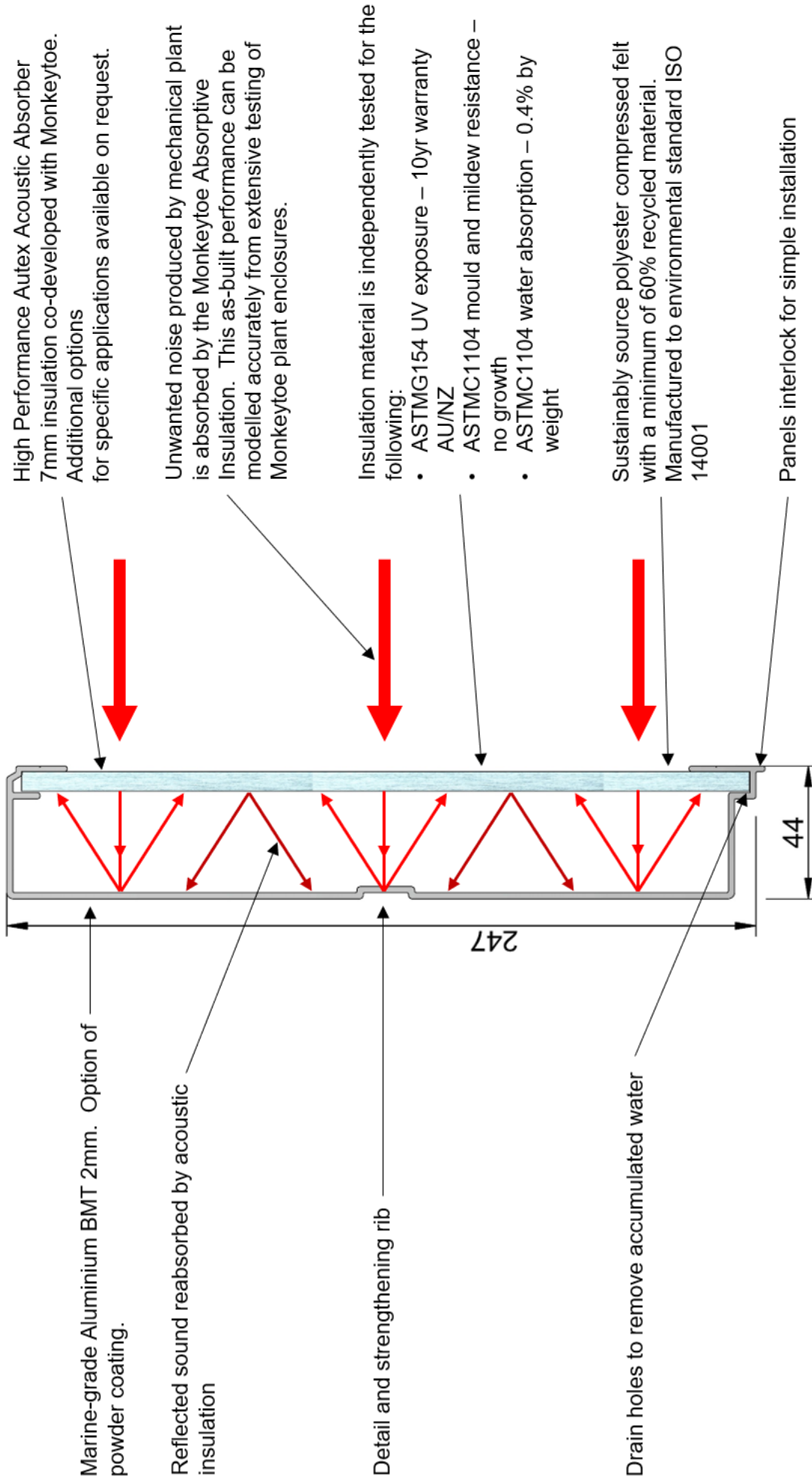
HUSHMONKEY PANEL SOUND REDUCTION INDEX		
Frequency (Hz)		dB
50		14.4
63		18.1
80		15.9
100		15.6
125		14.3
160		14.1
200		14.2
250		14.8
315		16.5
400		20.1
500		22.5
630		25.8
800		28.3
1000		28.0
1250		31.9
1600		31.6
2000		28.7
2500		29.3
3150		31.6
4000		33.1
5000		32.8
Rw Rating		26
Sound Reduction Index in accordance with ISO 10140		

HUSHMONKEY PANEL ACOUSTIC ABSORPTION PROPERTIES		
Frequency (Hz)		Absorption Coefficient, $\alpha$
50		-
63		-
80		-
100		0.05
125		0.09
160		0.14
200		0.18
250		0.24
315		0.30
400		0.47
500		0.59
630		0.72
800		0.80
1000		0.89
1250		0.97
1600		0.97
2000		0.98
2500		0.96
3150		0.89
4000		0.82
5000		0.76
NRC Rating		0.7
HushMonkey Panel Acoustic Absorption Properties in accordance with ISO 354 - 2003		

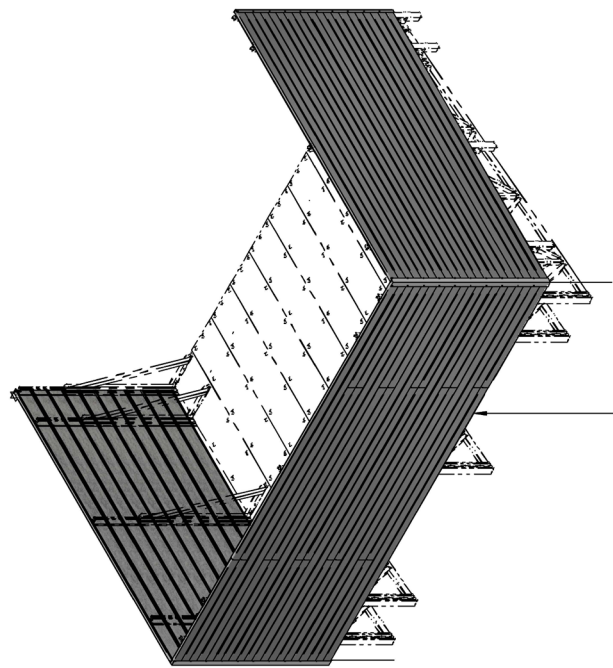
### PRODUCT IMAGES



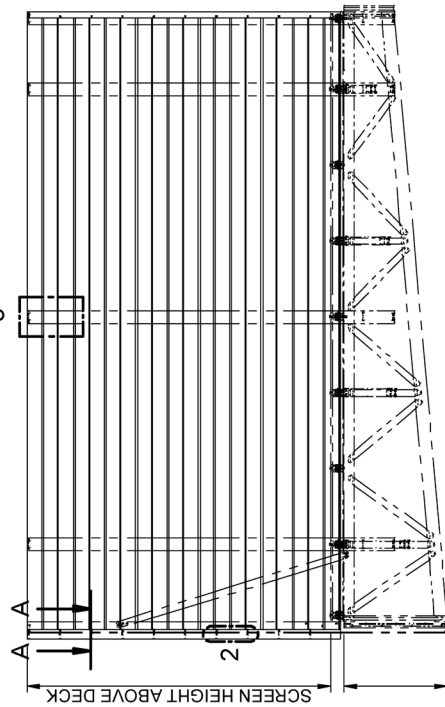




Descriptive Cross Section View			
Hushmonkey Absorptive Panelling			
DWG No: 3528- MCSV-1		13/08/2020	
	SHEET 1 OF 1	A3	REV:01
DO NOT SCALE	SCALE: 1:1.25	DIMENSIONS IN MILLIMETERS	

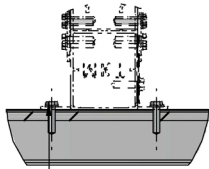


WHEN THERE IS A JOIN IN THE  
ACOUSTIC EXTRUSION, ALTERNATE  
LEFT TO RIGHT AND APPLY JOINER PLATE



REFER TO PLATFORM SPECIFIC DETAILS  
400mm NOM.

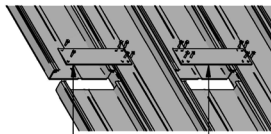
SIDE ELEVATION



DETAIL 1  
1:4

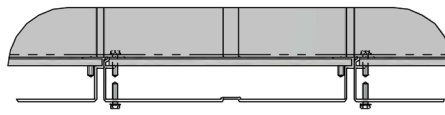
12G x 22mm TEK  
THRU 1 SIDE ONLY

FIXED WITH 12G 22mm TEKS  
BOTH SIDES OF SCREEN SUPPORT  
FOLLOWING V-GROVE IN  
ACOUSTIC EXTRUSION

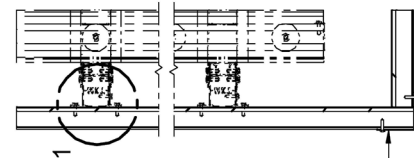


TOP JOINER PLATE (INSIDE ONLY)  
FIXED WITH 12G 22mm TEKS  
INTO TOP AND BOTTOM OF  
ACOUSTIC EXTRUSION  
AND TOP OF BELOW EXTRUSION

JOINER PLATE (INSIDE ONLY)  
FIXED WITH 12G 22mm TEKS  
INTO TOP AND BOTTOM OF  
ACOUSTIC EXTRUSION  
AND TOP OF BELOW EXTRUSION,  
AND BOTTOM OF ABOVE EXTRUSION



DETAIL 2  
1:5  
PANEL HORIZONTAL JOIN



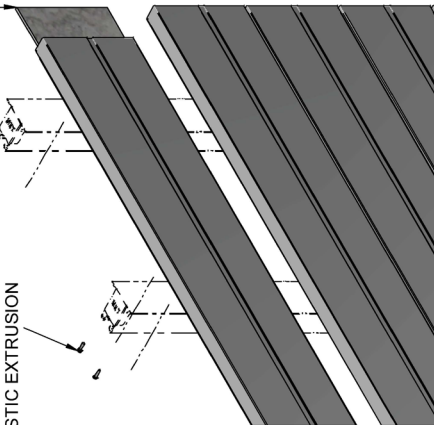
75x75x2.5/3mm EA - OUTSIDE CORNER  
FIXED WITH 12G 22mm TEKS  
@ 245mm CTRS

SECTION A-A  
1:10

DRAWN BY:	LJK
MODELED BY:	LJK
CHECKED BY:	BP/BD/LK
DATE DRAWN:	14/08/2020
LAST SAVED:	17/08/2020
MATERIAL:	SEE B.O.M.
FINISH:	MIII
TOLERANCES:	+0,-2.0/0.1"

INSULATION SLIDES INTO  
ACOUSTIC EXTRUSION

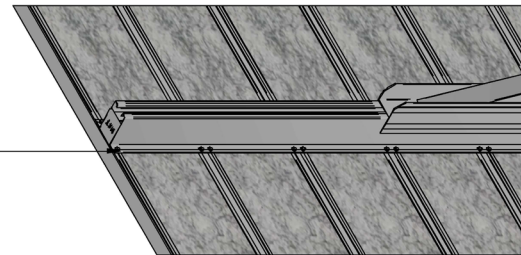
PM16 (50x50x3mm EA)  
OUTSIDE CORNER  
FIXED WITH 12G 22mm TEKS  
TOP AND BOTTOM OF  
ACOUSTIC EXTRUSION



PANEL END & NON JOIN POST FIXING DETAIL

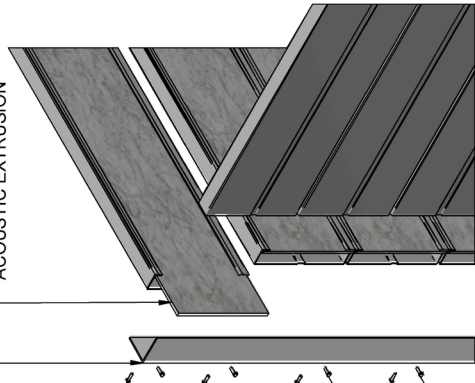
DETAIL 3  
1:10

FIXED WITH 12G 22mm TEKS  
BOTH SIDES OF SCREEN SUPPORT  
FOLLOWING V-GROVE IN  
ACOUSTIC EXTRUSION



75x75x2.5/3mm EA  
OUTSIDE CORNER  
FIXED WITH 12G 22mm TEKS  
TOP AND BOTTOM OF  
ACOUSTIC EXTRUSION

INSULATION SLIDES INTO  
ACOUSTIC EXTRUSION

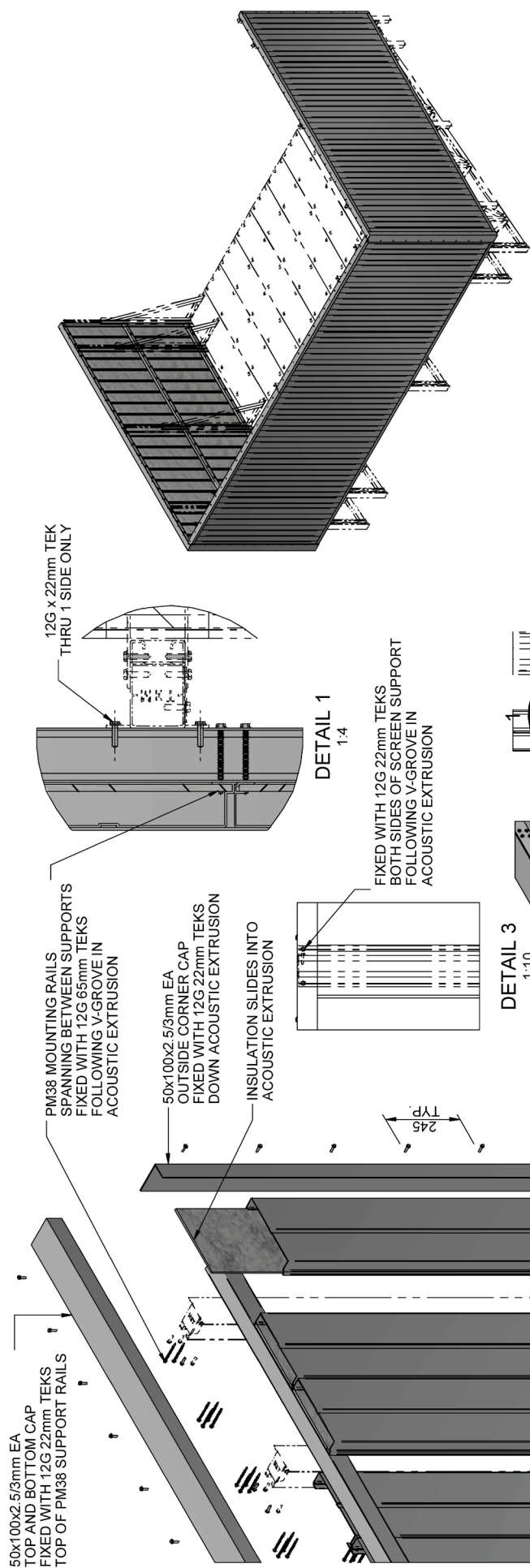


PANEL CORNER JOIN DETAIL

Monkeytoe

EVERYTHING BETTER

PLATFORM ABSORPTION ACOUSTIC SCREEN INSTALL DETAILS			
MONKEYTOE - 'HUSHMONKEY'			
DWG No:	MPAC-ID-HAA-01	2004	
		SHEET 1 OF 1	A3
		SCALE: 1:40	REV:01
		DIMENSIONS IN MILLIMETERS	
		DO NOT SCALE	

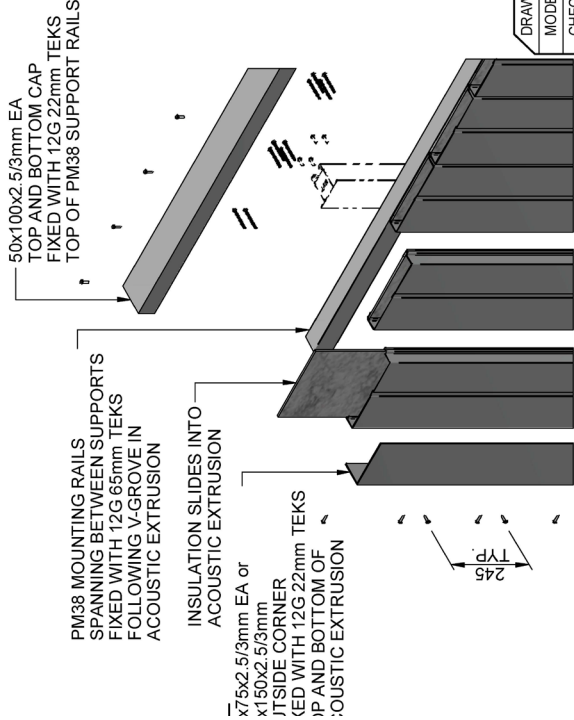


DETAIL 1  
1:4

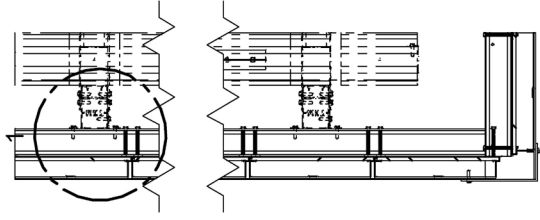
FIXED WITH 12G 22mm TEKS  
BOTH SIDES OF SCREEN SUPPORT  
FOLLOWING V-GROVE IN  
ACOUSTIC EXTRUSION

DETAIL 3  
1:10

PANEL END & NON JOIN POST FIXING DETAIL

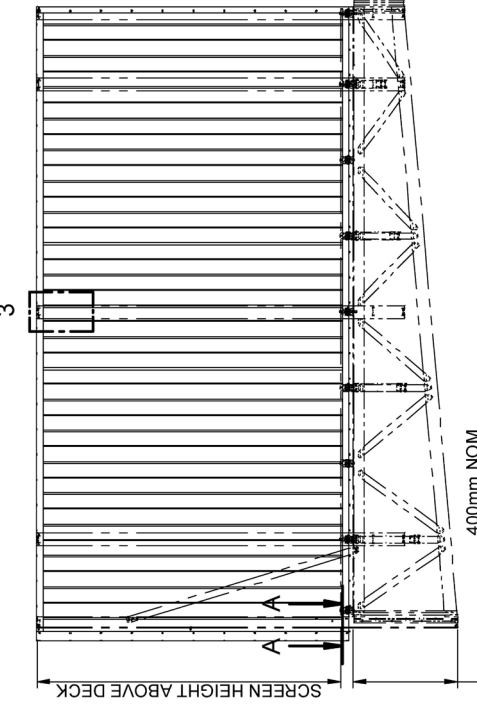


PANEL CORNER JOIN DETAIL



REFER TO PLATFORM SPECIFIC DETAILS

SIDE ELEVATION



PLATFORM VERTICAL ABSORPTION ACOUSTIC SCREEN INSTALL DETAILS			
MONKEYTOE - 'HUSHMONKEY'		2004	
DWG No: MPAC-ID-VAA-01	SHEET 1 OF 2		A3
DO NOT SCALE		SCALE: 1:40	REV:01
		DIMENSIONS IN MILLIMETERS	

Monkeytoe

EVERYTHING BETTER

DRAWN BY:	LJK
MODELED BY:	LJK
CHECKED BY:	BP/BD/LK
DATE DRAWN:	14/08/2020
LAST SAVED:	17/08/2020
MATERIAL:	SEE B.O.M.
FINISH:	MIII
TOLERANCES:	+0,-2.0/0.1"

	Vertical support spacings	900mm	1200mm	1500mm	1800mm	2100mm	2400mm
KPA loading	1kpa	2400mm	2400mm	2400mm	1750mm	1100mm	750mm
	2kpa	2400mm	2400mm	1500mm	875mm	550mm	375mm
	3kpa	2400mm	2000mm	1025mm	575mm	375mm	250mm
	4kpa	2400mm	1500mm	750mm	425mm	275mm	175mm
ROOF SHEETING AREA PER PM38 RAIL							

DRAWN BY:	LJK
MODELED BY:	LJK
CHECKED BY:	BP/BD/LK
DATE DRAWN:	14/08/2020
LAST SAVED:	17/08/2020
MATERIAL:	SEE B.O.M.
FINISH:	MIII
TOLERANCES:	+0,-2.0;0.1°

Monkeytoe

EVERYTHING BETTER

0800 658 637 - [www.monkeytoe.co.nz](http://www.monkeytoe.co.nz)

PLATFORM VERTICAL ABSORPTION ACOUSTIC SCREEN INSTALL DETAILS			
MONKEYTOE - 'HUSHMONKEY'		2004	
DWG No:	MPAC-ID-VAA-01	SHEET 2 OF 2	
		SCALE: 1:1	REV:01
DO NOT SCALE		DIMENSIONS IN MILLIMETERS	