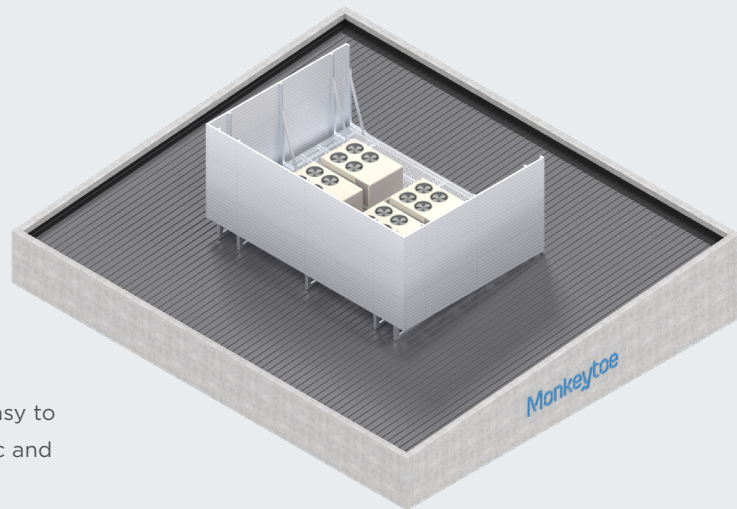


HushMonkey - Reflective Acoustic Screening



PRODUCT DESCRIPTION

The Hushmonkey RC26 reflective acoustic screening system is an easy to install, simple and innovative wall system which provides a simplistic and visually appealing barrier whilst reflecting unwanted noise away.

TYPICAL USES / APPLICATIONS

- Perfect for a wide range of industrial applications
- Equipment platform screening
- Plantrooms
- Machine enclosures
- Data centres
- Hospitals
- Generator/Compressor Enclosures
- Power Stations
- Factories/Warehouses
- Airports
- Outdoor sound control walls

CHARACTERISTICS / ADVANTAGES

- Highly durable providing long-term stability and performance
- Excellent acoustic performance
- Innovative, economical and straight forward installation system
- Easily adaptable and modular if requirements change
- As installed acoustic performance can be modelled very accurately with results of extensive field and laboratory testing.
- Can be run vertical or horizontally for visual effect
- Pre-engineered system configurable for all wind loads
- Highly rigid extrusion profile offers greater sound reduction than sheet type barriers

TECHNICAL DATA / MATERIALS

- 254 x 40mm architectural marine-grade aluminium channel with a powder coated exterior.
- Surface weight - 7.5kg/m²
- Materials - 6060-T5 aluminium
- Channel dimensions - 254mm x 40mm

TESTS

APPROVALS / STANDARDS

- Structural design action B1 & B2
- AS/NZS 1170 Standards Australia / New Zealand (Relevant parts)
- Transmission loss testing conducted by University of Auckland Acoustic Testing Services, to both ISO 10140-2 (Reports available by request)

WARRANTY

- 10 years product warranty

MAINTENANCE

- It is recommended that plant platforms are included in the standard 'building warrant of fitness' inspections.
- All damage or loose fixings to be reported immediately to asset manager or building owner for correction.

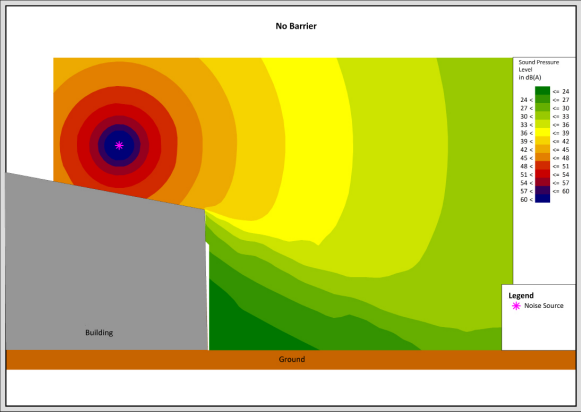


Fig.1 - No barrier

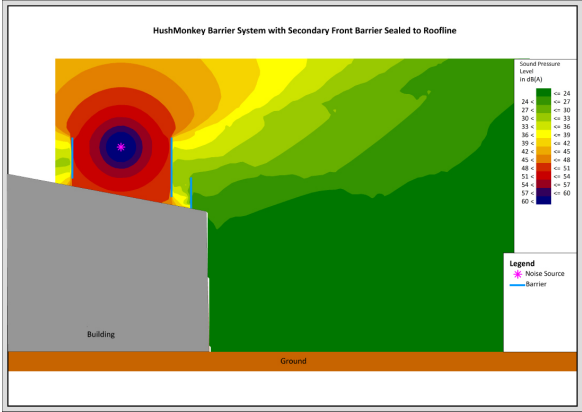


Fig.2 - HushMonkey barrier with second front barrier sealed to roofline to allow airflow

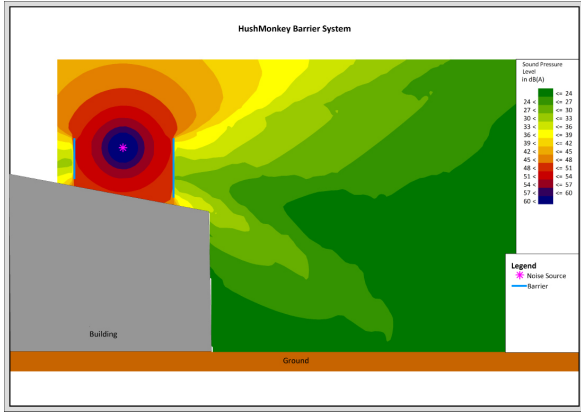
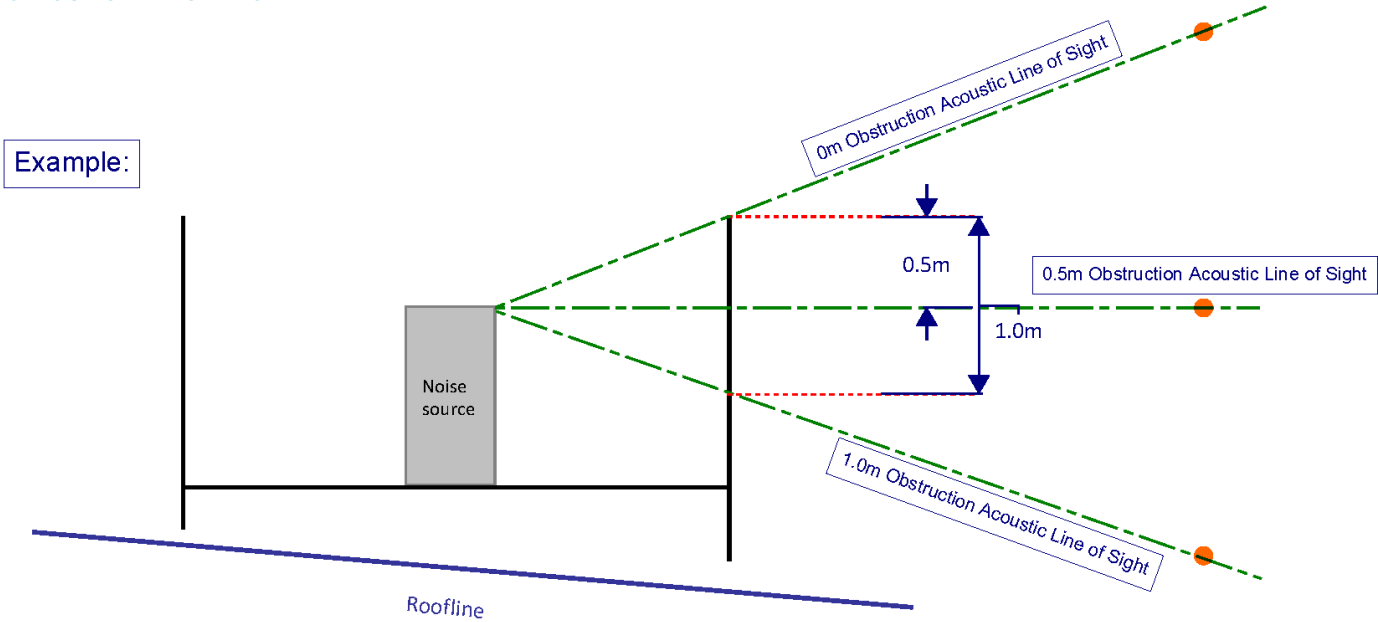


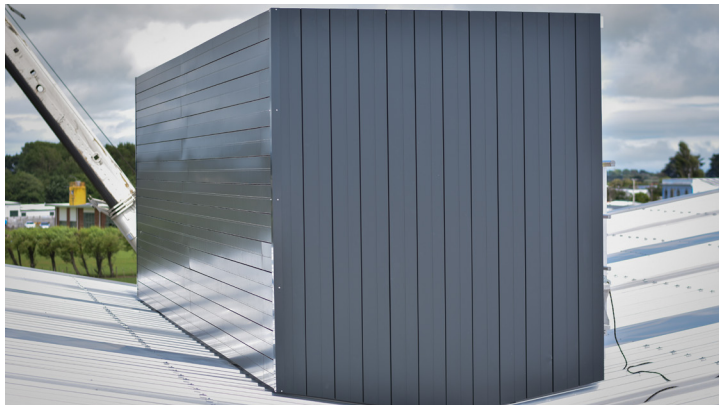
Fig.3 - HushMonkey barrier

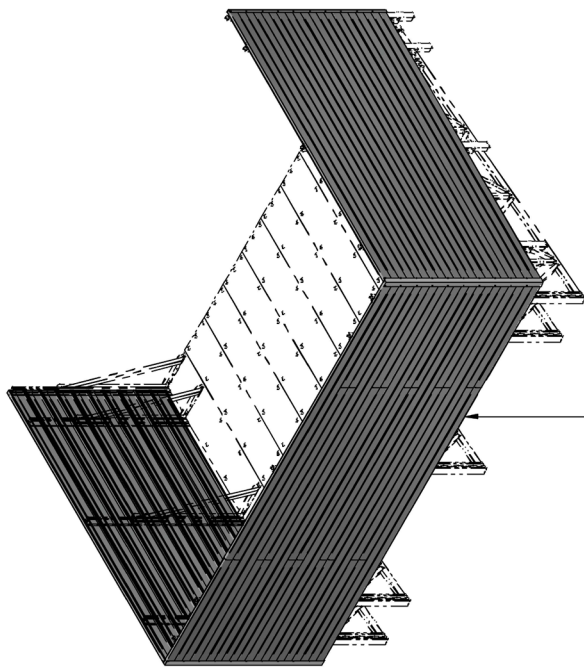
OBSTRUCTION DIAGRAMS



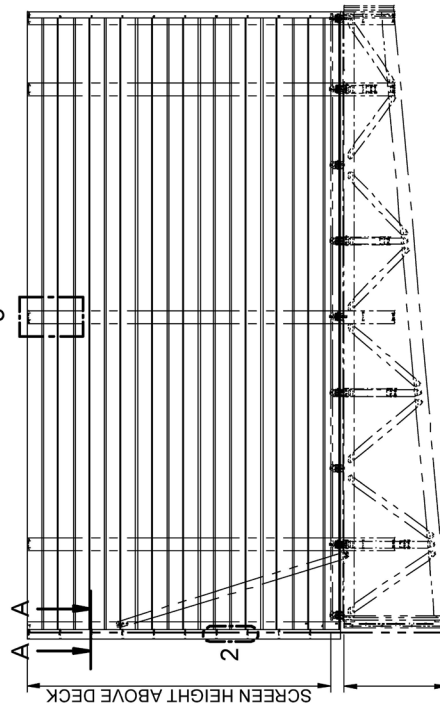
HUSHMONKEY – REFLECTIVE (2mm) SOUND REDUCTION INDEX	
Frequency (Hz)	dB
50	10.8
63	13.5
80	12.3
100	11.6
125	15.0
160	14.2
200	14.6
250	16.2
315	17.2
400	19.6
500	21.0
630	22.7
800	24.4
1000	26.3
1250	28.3
1600	30.1
2000	31.4
2500	32.5
3150	33.2
4000	33.0
5000	31.5
Rw Rating	26
Sound Reduction Index in accordance with ISO 10140-2	

PRODUCT IMAGES



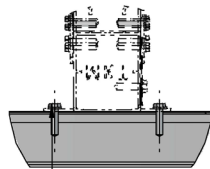


WHEN THERE'S A JOIN IN THE
ACOUSTIC EXTRUSION, ALTERNATE
LEFT TO RIGHT AND APPLY JOINER PLATE



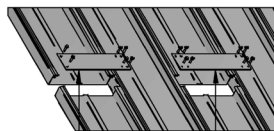
400mm NOM.
REFER TO PLATFORM SPECIFIC DETAILS

SIDE ELEVATION



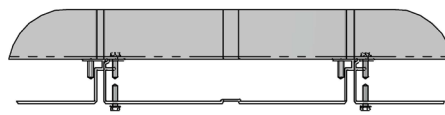
DETAIL 1
1:4

12G x 22mm TEK
THRU 1 SIDE ONLY

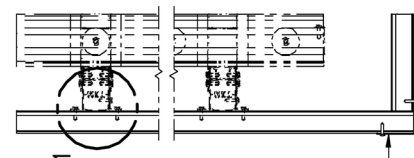


TOP JOINER PLATE (INSIDE ONLY)
FIXED WITH 12G 22mm TEKs
INTO TOP AND BOTTOM OF
ACOUSTIC EXTRUSION
AND TOP OF BELOW EXTRUSION

JOINER PLATE (INSIDE ONLY)
FIXED WITH 12G 22mm TEKs
INTO TOP AND BOTTOM OF
ACOUSTIC EXTRUSION
AND TOP OF BELOW EXTRUSION
AND BOTTOM OF ABOVE EXTRUSION



DETAIL 2
1:5
PANEL HORIZONTAL JOIN



75x75x2.5/3mm EA - OUTSIDE CORNER
FIXED WITH 12G 22mm TEKs
@ 245mm CTRS

SECTION A-A
1:10

DRAWN BY:	LJK
MODELED BY:	LJK
CHECKED BY:	BP/BD/LK
DATE DRAWN:	21/07/2020
LAST SAVED:	17/08/2020
MATERIAL:	SEE B.O.M.
FINISH:	MIII
TOLERANCES:	+0,-2.0;0.1"

PM16 (50x50x3mm EA)
OUTSIDE CORNER
FIXED WITH 12G 22mm TEKs
TOP AND BOTTOM OF
ACOUSTIC EXTRUSION

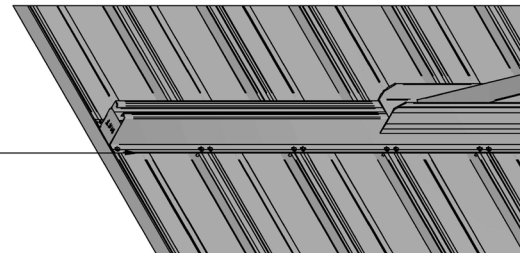
FIXED WITH 12G 22mm TEKs
BOTH SIDES OF SCREEN SUPPORT
FOLLOWING V-GROVE IN
ACOUSTIC EXTRUSION



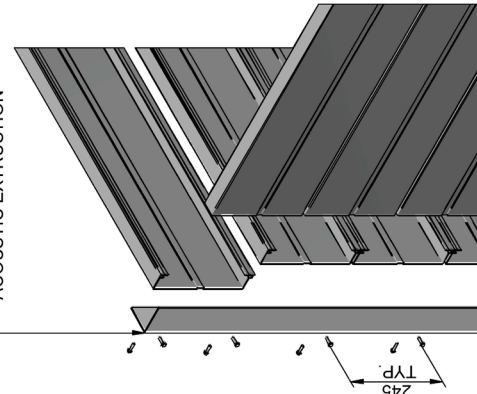
DETAIL 3
1:10

PANEL END & NON JOIN POST FIXING DETAIL

FIXED WITH 12G 22mm TEKs
BOTH SIDES OF SCREEN SUPPORT
FOLLOWING V-GROVE IN
ACOUSTIC EXTRUSION



75x75x2.5/3mm EA
OUTSIDE CORNER
FIXED WITH 12G 22mm TEKs
TOP AND BOTTOM OF
ACOUSTIC EXTRUSION

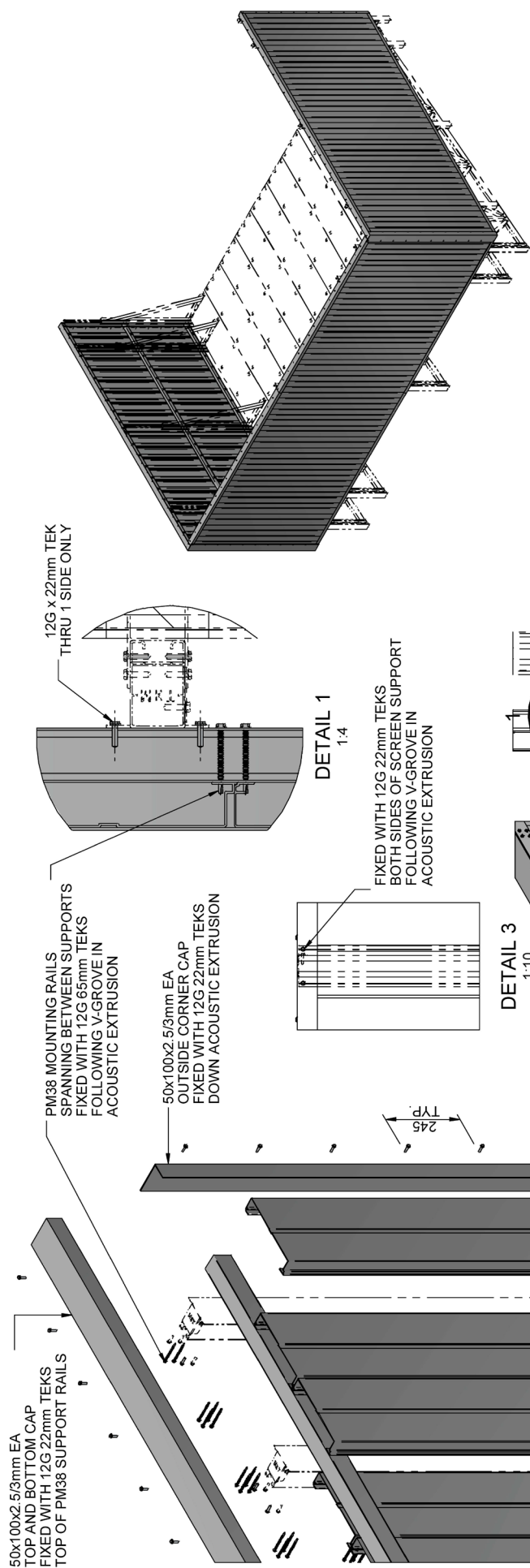


PANEL CORNER JOIN DETAIL

Monkeytoe

EVERYTHING BETTER

PLATFORM REFLECTIVE ACOUSTIC SCREEN INSTALL DETAILS			
MONKEYTOE - 'HUSHMONKEY'			
DWG No: MPAC-ID-HRA-01	2004		
SHEET 1 OF 1		A3	REV:01
DO NOT SCALE		SCALE: 1:40	
		DIMENSIONS IN MILLIMETERS	

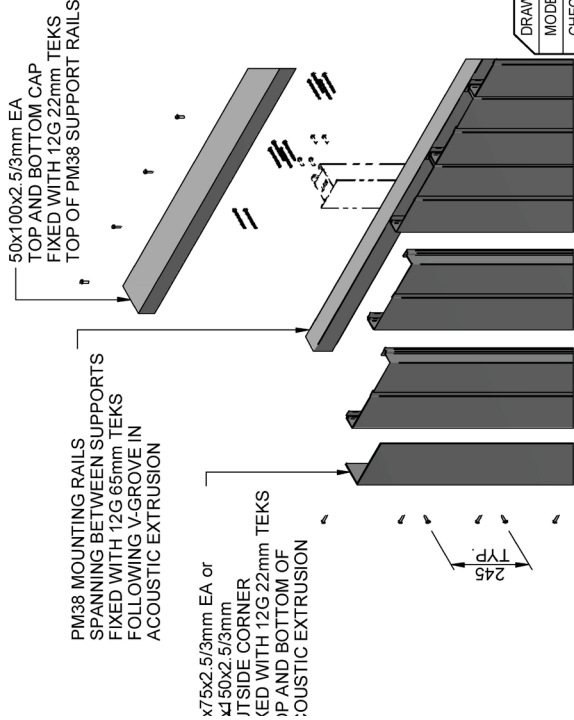


DETAIL 1
1:4

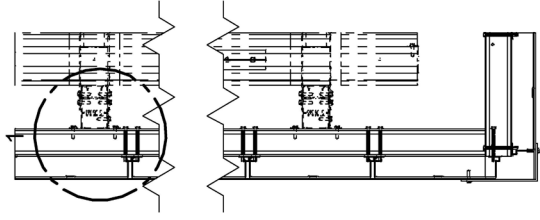
FIXED WITH 12G 22mm TEKS
BOTH SIDES OF SCREEN SUPPORT
FOLLOWING V-GROVE IN
ACOUSTIC EXTRUSION

DETAIL 3
1:10

PANEL END & NON JOIN POST FIXING DETAIL

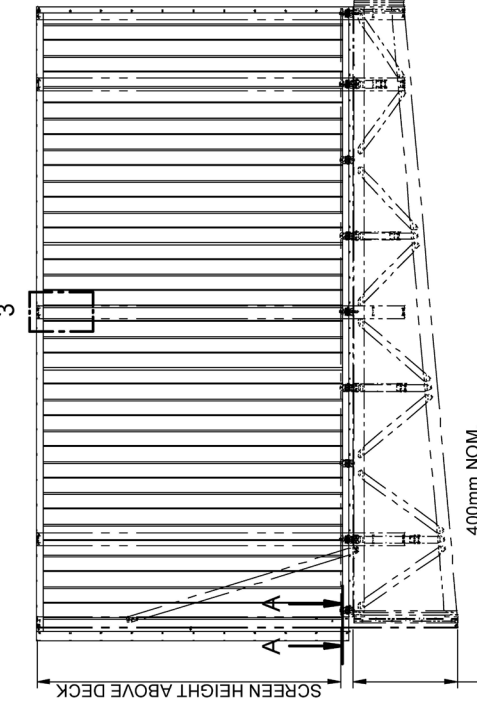


PANEL CORNER JOIN DETAIL



REFER TO PLATFORM SPECIFIC DETAILS

SIDE ELEVATION



PLATFORM VERTICAL REFLECTIVE ACOUSTIC SCREEN INSTALL DETAILS			
MONKEYTOE - 'HUSHMONKEY'		2004	
DWG No: MPAC-ID-VRA-01	SHEET 1 OF 2		A3
DO NOT SCALE		SCALE: 1:40	REV:01
		DIMENSIONS IN MILLIMETERS	

Monkeytoe

EVERYTHING BETTER

DRAWN BY:	LJK
MODELED BY:	LJK
CHECKED BY:	BP/BD/LK
DATE DRAWN:	12/08/2020
LAST SAVED:	14/08/2020
MATERIAL:	SEE B.O.M.
FINISH:	MIII
TOLERANCES:	+0,-2.0/0.1"

	Vertical support spacings	900mm	1200mm	1500mm	1800mm	2100mm	2400mm
KPA loading	1 kpa	2400mm	2400mm	2400mm	1750mm	1100mm	750mm
	2 kpa	2400mm	2400mm	1500mm	875mm	550mm	375mm
	3 kpa	2400mm	2000mm	1025mm	575mm	375mm	250mm
	4 kpa	2400mm	1500mm	750mm	425mm	275mm	175mm
ROOF SHEETING AREA PER PW38 RAIL							

DRAWN BY:	LJK
MODELED BY:	LJK
CHECKED BY:	BP/BD/LK
DATE DRAWN:	12/08/2020
LAST SAVED:	14/08/2020
MATERIAL:	SEE B.O.M.
FINISH:	MIII
TOLERANCES:	+0,-2.0;0.1°

Monkeytoe

EVERYTHING BETTER

PLATFORM VERTICAL REFLECTIVE ACOUSTIC SCREEN INSTALL DETAILS			
MONKEYTOE - 'HUSHMONKEY'		2004	
DWG No:	MPAC-ID-VRA-01	SHEET 2 OF 2	
		SCALE: 1:1	REV:01
DO NOT SCALE		DIMENSIONS IN MILLIMETERS	