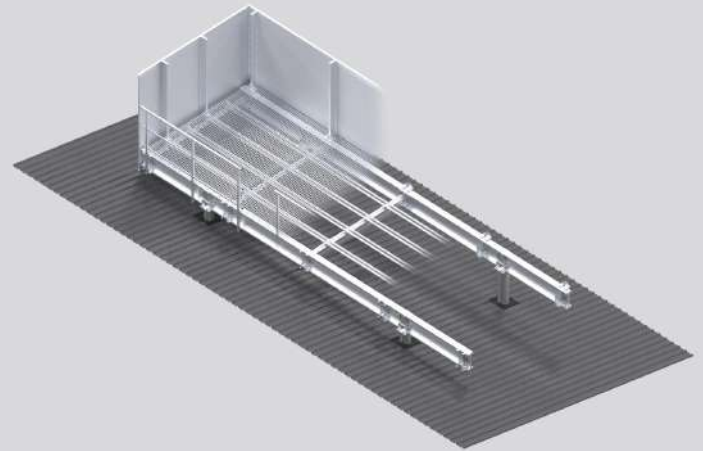


XBEAM

Aluminium Structural Beam Platform System



PRODUCT DESCRIPTION

Monkeytoe Xbeam system is a revolutionary lightweight configurable beam system that is part of the Modular Xbeam platform system.

TYPICAL USES / APPLICATIONS

- Rooftop mounting of large airconditioning, refrigeration and ventilation plants.
- Bridges
- Long span external access and mounting systems
- Internal raised access systems where minimal support points are available.
- Any structure where weight is an issue

CHARACTERISTICS / ADVANTAGES (BEAM)

- Lightweight – Up to 65% lighter than steel equivalent; less loading on supporting structure
- No surface coating requirements for corrosion protection
- Low deflection for superior acoustic performance

CHARACTERISTICS / ADVANTAGES (PLATFORM)

- Substantial reduction in height work by enabling the platform to be assembled offsite, or at ground level then lifted to the roof fully assembled or in completed sections.
- Reduce risk of damage to the roof by assembling the platform at ground level.
- Less load on the building structure. 65% lighter than a steel equivalent.
- A complete platform system. Compatible with all Monkeytoe handrails, louvre and hushmonkey acoustic screening systems
- Pre-engineered and highly configurable, which enables Last minute configuration tweaks without extensive workshop drawing updates.
- Manufactured under a ISO quality management system

TECHNICAL DATA / MATERIALS

- High tensile T6 Aluminium
- Carbon fibre pultrusion's manufactured in NZ
- Fixings - Dacromet, Zinc based coated Fixings. Coating exceeds durability of hot dip galvanizing and designed for Aluminium connections

TESTS

APPROVALS / STANDARDS

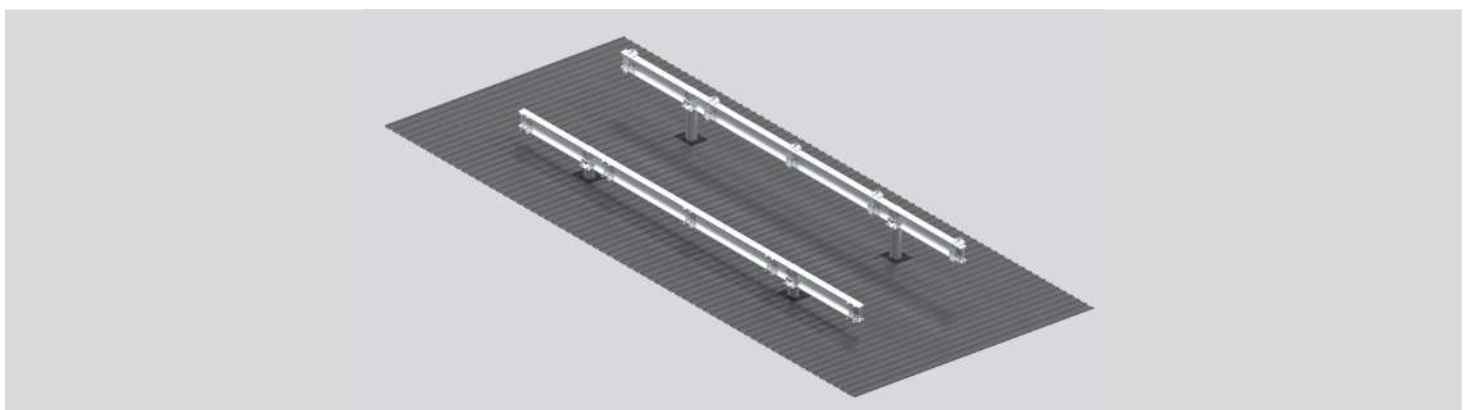
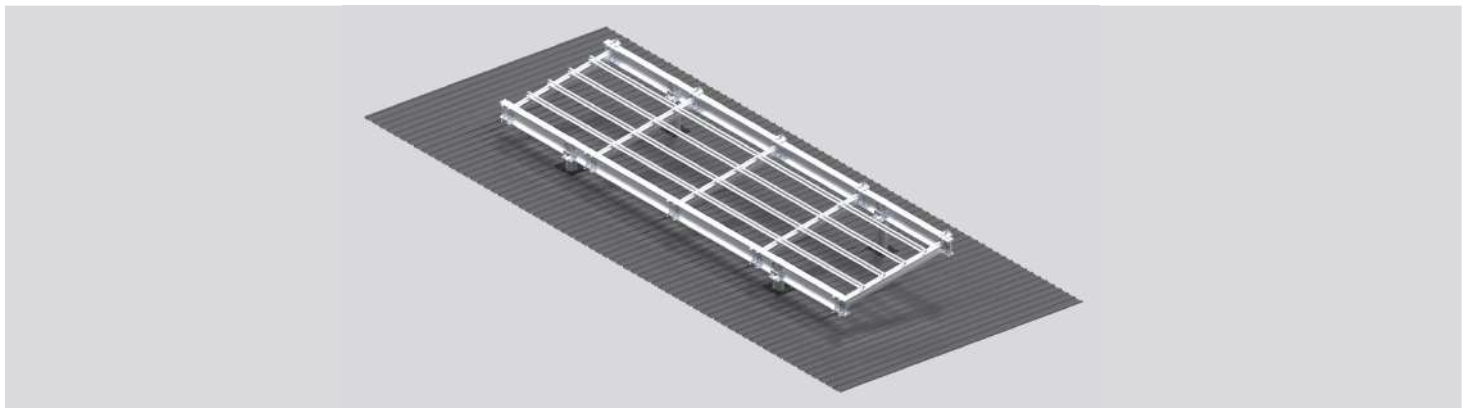
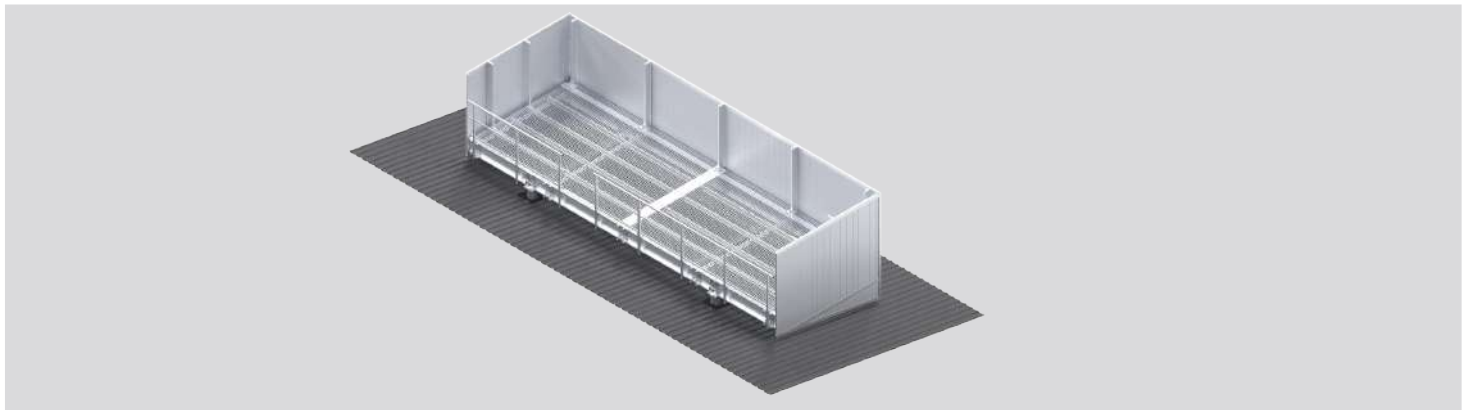
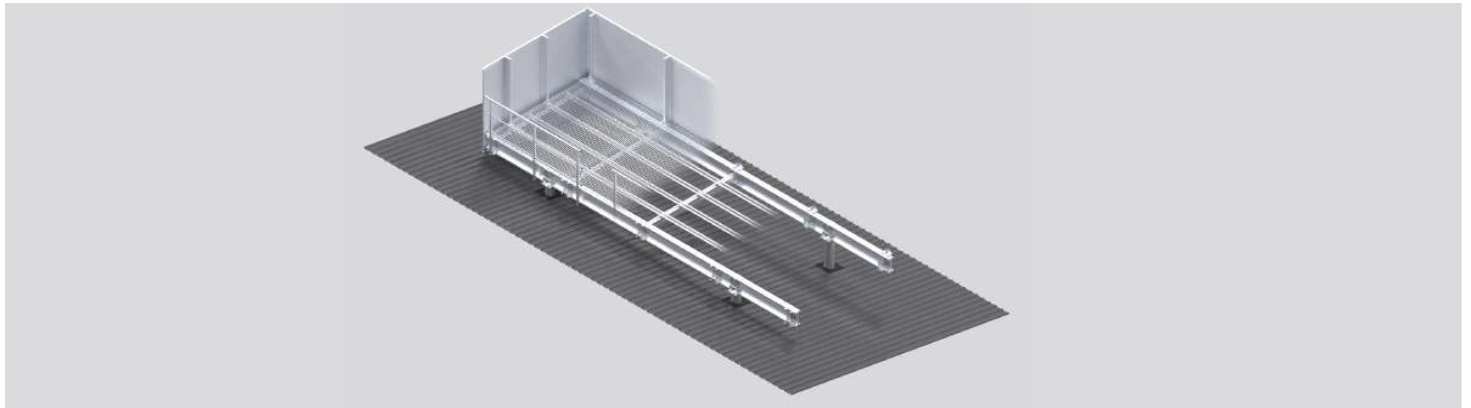
- Fully documented third party testing to ensure compliance to the building code. These included deflection, horizontal, load and temperature and durability
- ABCB NCC 2019
- AS 1657
- AS/NZS 11170.0 General Principles
- AS/NZS 1170.1 Permanent , Imposed and other actions
- AS/NZS 1170.2 Wind Actions
- AS/NZS 1170.4 Earthquake actions in Australia

WARRANTY

- 25 years and 2 years install

MAINTENANCE

- It is recommended that all plant platforms and access systems are included in the standard warrant of fitness. All damage of loose fixings are to be reported to the building manager.



PRODUCT IMAGES



UNIFORMLY DISTRIBUTED DESIGN LOAD CAPACITY (KN/M) WITH SIMPLY SUPPORTED CONDITIONS + FULL LATERAL RESTRAINT.
0.5 - 7.5m spans

Member	kg/m	Span in metres (m)														
		0.5	1.0	1.5	2.0	2.5	3.0	3.5	4.0	4.5	5.0	5.5	6.0	6.5	7.0	7.5
XB250.000	11.21	279	139	93.20	69.90	55.90	44.00	32.30	24.70	19.50	15.70	13.00	10.90	9.29	8.00	6.95
XB250.025	12.17	279	139	93.20	69.90	55.90	46.60	39.90	34.90	29.80	24.10	19.90	16.70	14.20	12.20	10.60
XB250.050	13.13	279	139	93.20	69.90	55.90	46.60	39.90	34.90	31.00	27.90	25.30	22.10	18.80	16.20	14.10
XB250.075	14.09	279	139	93.20	69.90	55.90	46.50	39.90	34.90	31.00	27.90	25.30	23.20	21.40	19.80	17.20
XB250.100	15.05	279	139	93.20	69.90	55.90	46.50	39.90	34.90	31.00	27.90	25.30	23.20	21.40	19.90	18.50
XB250.125	16.01	279	139	93.20	69.90	55.90	46.50	39.90	34.90	31.00	27.90	25.30	23.20	21.40	19.90	18.50
XB250.150	16.97	279	139	93.20	69.90	55.90	46.50	39.90	34.90	31.00	27.90	25.30	23.20	21.40	19.90	18.50
XB400.000	15.28	479	239	159	119	95.90	79.90	62.80	48.10	37.90	30.70	25.30	21.30	18.10	15.60	13.50
XB400.025	16.24	479	239	159	119	95.90	79.90	68.40	59.90	53.20	43.90	36.20	30.40	25.90	22.30	19.40
XB400.050	17.20	479	239	159	119	95.90	79.90	68.40	59.90	53.20	47.90	43.50	39.00	33.20	28.60	24.90
XB400.075	18.16	479	239	159	119	95.90	79.90	68.40	59.90	53.20	47.90	43.50	39.90	36.80	34.10	30.10
XB400.100	19.12	479	239	159	119	95.90	79.90	68.40	59.90	53.20	47.90	43.50	39.90	36.80	34.10	31.90
XB400.125	20.08	479	239	159	119	95.90	79.90	68.40	59.90	53.20	47.90	43.50	39.90	36.80	34.10	31.90
XB400.150	21.04	479	239	159	119	95.80	79.80	68.40	59.80	53.20	47.80	43.50	39.80	36.80	34.10	31.80
XB550.000	19.35	719	359	239	179	143	119	102	79.89	63.09	51.06	42.17	35.40	30.14	25.96	22.59
XB550.025	20.31	719	359	239	179	143	119	102	89.90	79.90	68.92	56.92	47.80	40.70	35.06	30.52
XB550.050	21.27	719	359	239	179	143	119	102	89.80	79.80	71.80	65.30	59.54	50.70	43.69	38.03
XB550.075	22.23	719	359	239	179	143	119	102	89.80	79.80	71.80	65.30	59.80	55.20	51.30	45.16
XB550.100	23.19	719	359	239	179	143	119	102	89.80	79.80	71.80	65.30	59.80	55.20	51.30	47.80
XB550.125	24.15	719	359	239	179	143	119	102	89.80	79.80	71.80	65.30	59.80	55.20	51.30	47.80
XB550.150	25.11	719	359	239	179	143	119	102	89.80	79.80	71.80	65.30	59.80	55.20	51.30	47.80

*Bold line indicates difference between shear and bending failure mode.

8.0 - 15.0m spans

Member	kg/m	Span in metres (m)														
		8.0	8.5	9.0	9.5	10.0	10.5	11.0	11.5	12.0	12.5	13.0	13.5	14.0	14.5	15.0
XB250.000	11.21	6.10	5.39	4.79	4.29	3.86	3.49	3.17	2.89	2.65	2.43	2.24	2.07	1.91	1.78	1.65
XB250.025	12.17	9.37	8.29	7.38	6.61	5.95	5.39	4.90	4.47	4.10	3.77	3.47	3.21	2.98	2.77	2.58
XB250.050	13.13	12.30	10.90	9.76	8.75	7.88	7.14	6.49	5.93	5.43	5.00	4.61	4.26	3.96	3.68	3.43
XB250.075	14.09	15.10	13.40	11.90	10.70	9.66	8.75	7.96	7.27	6.67	6.13	5.66	5.24	4.86	4.52	4.22
XB250.100	15.05	17.40	15.70	13.90	12.50	11.30	10.20	9.32	8.51	7.80	7.18	6.63	6.13	5.69	5.30	4.94
XB250.125	16.01	17.40	16.30	15.40	14.20	12.80	11.60	10.50	9.65	8.85	8.14	7.52	6.96	6.46	6.01	5.61
XB250.150	16.97	17.40	16.30	15.40	14.60	13.90	12.80	11.70	10.70	9.81	9.03	8.33	7.72	7.16	6.67	6.22
XB400.000	15.28	11.90	10.50	9.38	8.40	7.57	6.85	6.23	5.68	5.21	4.79	4.41	4.08	3.78	3.52	3.28
XB400.025	16.24	17.00	15.10	13.40	12.00	10.80	9.84	8.95	8.17	7.49	6.89	6.36	5.89	5.46	5.08	4.74
XB400.050	17.20	21.90	19.30	17.20	15.40	13.90	12.60	11.50	10.50	9.64	8.87	8.19	7.58	7.04	6.55	6.11
XB400.075	18.16	26.40	23.40	20.80	18.70	16.80	15.20	13.90	12.70	11.60	10.70	9.90	9.17	8.51	7.93	7.39
XB400.100	19.12	29.90	27.20	24.20	21.70	19.60	17.70	16.10	14.70	13.50	12.40	11.50	10.60	9.91	9.22	8.61
XB400.125	20.08	29.90	28.10	26.50	24.60	22.10	20.10	18.20	16.70	15.30	14.10	13.00	12.00	11.20	10.40	9.74
XB400.150	21.04	29.80	28.10	26.50	25.10	23.80	22.20	20.20	18.50	17.00	15.60	14.40	13.40	12.40	11.50	10.80
XB550.000	19.35	19.83	17.54	15.63	14.01	12.62	11.43	10.40	9.50	8.71	8.01	7.39	6.84	6.35	5.90	5.50
XB550.025	20.31	26.80	23.72	21.13	18.95	17.08	15.47	14.08	12.87	11.80	10.86	10.03	9.28	8.62	8.02	7.48
XB550.050	21.27	33.40	29.56	26.35	23.62	21.30	19.30	17.57	16.06	14.73	13.56	12.52	11.59	10.77	10.02	9.35
XB550.075	22.23	39.66	35.11	31.29	28.06	25.31	22.93	20.88	19.08	17.51	16.12	14.89	13.79	12.80	11.92	11.13
XB550.100	23.19	44.80	40.38	35.99	32.28	29.11	26.38	24.02	21.95	20.14	18.55	17.13	15.87	14.74	13.73	12.81
XB550.125	24.15	44.80	42.20	39.80	36.28	32.72	29.65	27.00	24.68	22.65	20.85	19.26	17.84	16.58	15.44	14.41
XB550.150	25.11	44.80	42.20	39.80	37.70	35.80	32.76	29.82	27.27	25.02	23.04	21.28	19.72	18.32	17.06	15.93

*Bold line indicates difference between shear and bending failure mode.

UNIFORMLY DISTRIBUTED DESIGN LOAD CAPACITY(KN/M) FOR L/250 DEFLECTION. SIMPLY SUPPORTED CONDITIONS
+ FULL LATERAL RESTRAINT.

2.5 - 8.5m spans

Member	kg/m	Span in metres (m)												
		2.5	3.0	3.5	4.0	4.5	5.0	5.5	6.0	6.5	7.0	7.5	8.0	8.5
XB250.000	11.21	41.7	24.1	15.2	10.2	7.15	5.21	3.91	3.02	2.37	1.90	1.54	1.27	1.06
XB250.025	12.17		37.8	23.8	15.9	11.2	8.16	6.13	4.72	3.71	2.97	2.42	1.99	1.66
XB250.050	13.13			32.1	21.5	15.1	11.0	8.27	6.37	5.01	4.01	3.26	2.69	2.24
XB250.075	14.09				26.8	18.8	13.7	10.3	7.95	6.25	5.01	4.07	3.35	2.80
XB250.100	15.05				31.9	22.4	16.3	12.3	9.46	7.44	5.96	4.84	3.99	3.33
XB250.125	16.01					25.9	18.8	14.2	10.9	8.58	6.87	5.59	4.60	3.84
XB250.150	16.97					29.1	21.2	16.0	12.3	9.66	7.74	6.29	5.18	4.32
XB400.000	15.28		78.5	49.4	33.1	23.3	17.0	12.7	9.81	7.72	6.18	5.02	4.14	3.45
XB400.025	16.24				48.5	34.0	24.8	18.6	14.4	11.3	9.05	7.35	6.06	5.05
XB400.050	17.20					44.5	32.4	24.4	18.8	14.8	11.8	9.61	7.92	6.60
XB400.075	18.16						39.8	29.9	23.0	18.1	14.5	11.80	9.72	8.10
XB400.100	19.12						46.9	35.3	27.2	21.4	17.1	13.91	11.46	9.55
XB400.125	20.08							40.6	31.3	24.6	19.7	16.02	13.20	11.00
XB400.150	21.04								35.3	27.7	22.2	18.06	14.88	12.41
XB550.000	19.35				75.8	53.3	38.8	29.2	22.5	17.7	14.2	11.51	9.48	7.90
XB550.025	20.31					73.8	53.8	40.4	31.1	24.5	19.6	15.95	13.14	10.95
XB550.050	21.27						68.6	51.5	39.7	31.2	25.0	20.32	16.74	13.96
XB550.075	22.23							62.2	47.9	37.7	30.2	24.54	20.22	16.86
XB550.100	23.19								56.2	44.2	35.4	28.76	23.70	19.76
XB550.125	24.15									50.4	40.4	32.84	27.06	22.56
XB550.150	25.11										45.4	36.92	30.42	25.36

*Values under bold line do not reach deflection limit prior to shear/bending failure.

9.0 - 15.0m spans

Member	kg/m	Span in metres (m)												
		9.0	9.5	10.0	10.5	11.0	11.5	12.0	12.5	13.0	13.5	14.0	14.5	15.0
XB250.000	11.21	0.89	0.76	0.65	0.56	0.49	0.43	0.38	0.33	0.30	0.26	0.24	0.21	0.19
XB250.025	12.17	1.40	1.19	1.02	0.88	0.77	0.67	0.59	0.52	0.46	0.41	0.37	0.33	0.30
XB250.050	13.13	1.89	1.61	1.38	1.19	1.03	0.90	0.80	0.70	0.63	0.56	0.50	0.45	0.41
XB250.075	14.09	2.36	2.00	1.72	1.48	1.29	1.13	0.99	0.88	0.78	0.70	0.63	0.56	0.51
XB250.100	15.05	2.80	2.38	2.04	1.76	1.53	1.34	1.18	1.05	0.93	0.83	0.74	0.67	0.61
XB250.125	16.01	3.23	2.75	2.36	2.04	1.77	1.55	1.36	1.21	1.07	0.96	0.86	0.77	0.70
XB250.150	16.97	3.64	3.10	2.65	2.29	1.99	1.75	1.54	1.36	1.21	1.08	0.97	0.87	0.79
XB400.000	15.28	2.91	2.47	2.12	1.83	1.59	1.39	1.23	1.09	0.96	0.86	0.77	0.70	0.63
XB400.025	16.24	4.26	3.62	3.10	2.68	2.33	2.04	1.80	1.59	1.41	1.26	1.13	1.02	0.92
XB400.050	17.20	5.56	4.73	4.06	3.50	3.05	2.67	2.35	2.08	1.85	1.65	1.48	1.33	1.20
XB400.075	18.16	6.83	5.80	4.98	4.30	3.74	3.27	2.88	2.55	2.27	2.02	1.81	1.63	1.47
XB400.100	19.12	8.05	6.84	5.87	5.07	4.41	3.86	3.40	3.00	2.67	2.38	2.14	1.92	1.74
XB400.125	20.08	9.27	7.88	6.76	5.84	5.08	4.44	3.91	3.46	3.08	2.75	2.46	2.22	2.00
XB400.150	21.04	10.45	8.89	7.62	6.58	5.72	5.01	4.41	3.90	3.47	3.10	2.78	2.50	2.26
XB550.000	19.35	6.66	5.66	4.85	4.19	3.65	3.19	2.81	2.49	2.21	1.97	1.77	1.59	1.44
XB550.025	20.31	9.23	7.85	6.73	5.81	5.05	4.42	3.89	3.44	3.06	2.73	2.45	2.21	1.99
XB550.050	21.27	11.76	10.00	8.57	7.40	6.44	5.64	4.96	4.39	3.90	3.48	3.12	2.81	2.54
XB550.075	22.23	14.20	12.07	10.35	8.94	7.78	6.81	5.99	5.30	4.71	4.21	3.77	3.40	3.07
XB550.100	23.19	16.65	14.15	12.13	10.48	9.12	7.98	7.02	6.21	5.52	4.93	4.42	3.98	3.60
XB550.125	24.15	19.01	16.16	13.85	11.97	10.41	9.11	8.02	7.09	6.31	5.63	5.05	4.54	4.11
XB550.150	25.11	21.36	18.17	15.58	13.45	11.70	10.24	9.01	7.97	7.09	6.33	5.68	5.11	4.61

*Values under bold line do not reach deflection limit prior to shear/bending failure.

UNIFORMLY DISTRIBUTED DESIGN LOAD CAPACITY(KN/M) FOR L/300 DEFLECTION. SIMPLY SUPPORTED CONDITIONS
+ FULL LATERAL RESTRAINT.

2.5 - 8.5m spans

Member	kg/m	Span in metres (m)												
		2.5	3.0	3.5	4.0	4.5	5.0	5.5	6.0	6.5	7.0	7.5	8.0	8.5
XB250.000	11.21	34.7	20.1	12.7	8.48	5.96	4.34	3.26	2.51	1.98	1.58	1.29	1.06	0.884
XB250.025	12.17	54.4	31.5	19.8	13.3	9.33	6.80	5.11	3.93	3.09	2.48	2.01	1.66	1.38
XB250.050	13.13		42.5	26.7	17.9	12.6	9.18	6.89	5.31	4.18	3.34	2.72	2.24	1.87
XB250.075	14.09			33.4	22.4	15.7	11.4	8.60	6.63	5.21	4.17	3.39	2.80	2.33
XB250.100	15.05			39.7	26.6	18.7	13.6	10.2	7.88	6.20	4.96	4.04	3.33	2.77
XB250.125	16.01				30.7	21.5	15.7	11.8	9.09	7.15	5.72	4.65	3.84	3.20
XB250.150	16.97				34.6	24.3	17.7	13.3	10.2	8.05	6.45	5.24	4.32	3.60
XB400.000	15.28		65.4	41.2	27.6	19.4	14.1	10.6	8.18	6.43	5.15	4.19	3.45	2.88
XB400.025	16.24			60.3	40.4	28.4	20.7	15.5	12.0	9.42	7.54	6.13	5.05	4.21
XB400.050	17.20				52.8	37.1	27.0	20.3	15.6	12.3	9.85	8.01	6.60	5.50
XB400.075	18.16					45.5	33.2	24.9	19.2	15.1	12.1	9.83	8.10	6.75
XB400.100	19.12						39.1	29.4	22.6	17.8	14.3	11.6	9.55	7.96
XB400.125	20.08						45.1	33.9	26.1	20.5	16.4	13.3	11.0	9.17
XB400.150	21.04							38.2	29.4	23.1	18.5	15.0	12.4	10.3
XB550.000	19.35			94.3	63.2	44.4	32.4	24.3	18.7	14.7	11.8	9.59	7.90	6.59
XB550.025	20.31				87.6	61.5	44.9	33.7	26.0	20.4	16.3	13.3	11.0	9.13
XB550.050	21.27					78.4	57.1	42.9	33.1	26.0	20.8	16.9	14.0	11.6
XB550.075	22.23						69.0	51.9	39.9	31.4	25.2	20.4	16.9	14.0
XB550.100	23.19							60.8	46.8	36.8	29.5	24.0	19.8	16.5
XB550.125	24.15								53.5	42.0	33.7	27.4	22.6	18.8
XB550.150	25.11									47.3	37.8	30.8	25.4	21.1

*Values under bold line do not reach deflection limit prior to shear/bending failure.

9.0 - 15.0m spans

Member	kg/m	Span in metres (m)												
		9.0	9.5	10.0	10.5	11.0	11.5	12.0	12.5	13.0	13.5	14.0	14.5	15.0
XB250.000	11.21	0.744	0.633	1.543	0.469	0.408	0.357	0.314	0.278	0.247	0.221	0.198	0.178	0.161
XB250.025	12.17	1.17	0.991	0.850	0.734	0.639	0.559	0.492	0.435	2.387	0.345	0.310	0.279	0.252
XB250.050	13.13	1.57	1.34	1.15	0.991	0.862	0.754	0.664	0.587	0.522	0.466	0.418	0.376	0.340
XB250.075	14.09	1.96	1.67	1.43	1.24	1.08	0.941	0.828	0.733	0.654	0.582	0.522	0.469	0.424
XB250.100	15.05	2.34	1.99	1.70	1.47	1.28	1.12	0.985	0.872	0.775	0.692	0.620	0.558	0.504
XB250.125	16.01	2.69	2.29	1.96	1.70	1.48	1.29	1.14	1.01	0.894	0.798	0.716	0.644	0.582
XB250.150	16.97	3.03	2.58	2.21	1.91	1.66	1.45	1.28	1.13	1.01	0.899	0.806	0.726	0.655
XB400.000	15.28	2.42	2.06	1.77	1.53	1.33	1.16	1.02	0.904	0.804	0.718	0.644	0.579	0.523
XB400.025	16.24	3.55	3.02	2.59	2.23	1.94	1.70	1.50	1.32	1.18	1.05	0.942	0.848	0.766
XB400.050	17.20	4.64	3.94	3.38	2.92	2.54	2.22	1.96	1.73	1.54	1.37	1.23	1.11	1.00
XB400.075	18.16	5.69	4.84	4.15	3.58	3.12	2.73	2.40	2.12	1.89	1.69	1.51	1.36	1.23
XB400.100	19.12	6.71	5.70	4.89	4.22	3.67	3.21	2.83	2.50	2.23	1.99	1.78	1.60	1.45
XB400.125	20.08	7.73	6.57	5.63	4.87	4.23	3.70	3.26	2.88	2.56	2.29	2.05	1.85	1.67
XB400.150	21.04	8.71	7.40	6.35	5.48	4.77	4.17	3.67	3.25	2.89	2.58	2.31	2.08	1.88
XB550.000	19.35	5.55	4.72	4.04	3.49	3.04	2.66	2.34	2.07	1.84	1.64	1.47	1.33	1.20
XB550.025	20.31	7.69	6.54	5.61	4.84	4.21	3.69	3.24	2.87	2.55	2.28	2.04	1.84	1.66
XB550.050	21.27	9.80	8.33	7.14	6.17	5.37	4.70	4.13	3.66	3.25	2.90	2.60	2.34	2.12
XB550.075	22.23	11.8	10.1	8.63	7.45	6.48	5.67	4.99	4.42	3.93	3.51	3.14	2.83	2.56
XB550.100	23.19	13.9	11.8	10.1	8.74	7.60	6.65	5.85	5.18	4.60	4.11	3.69	3.32	3.00
XB550.125	24.15	15.8	13.5	11.5	9.97	8.67	7.59	6.68	5.91	5.26	4.69	4.21	3.79	3.42
XB550.150	25.11	17.8	15.1	13.0	11.2	9.75	8.53	7.51	6.65	5.91	5.28	4.73	4.26	3.85

*Values under bold line do not reach deflection limit prior to shear/bending failure.

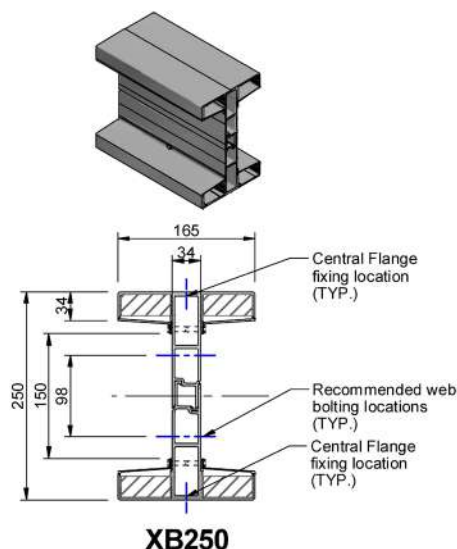
DESIGN MOMENT CAPACITY (KN/M) WITHOUT LATERAL RESTRAINT.

0.5 - 4.0m spans

Member	kg/m	φM	Effective unbraced length in metres (m)							
			0.5	1.0	1.5	2.0	2.5	3.0	3.5	4.0
XB250.000	11.21	49.69	46.31	42.92	39.53	36.13	32.74	29.35	21.48	16.45
XB250.025	12.17	75.98	71.19	66.42	61.65	56.88	52.12	47.35	38.83	29.73
XB250.050	13.13	100.20	94.16	88.21	82.27	76.32	70.37	64.43	57.16	43.76
XB250.075	14.09	122.58	115.40	108.43	101.46	94.49	87.52	80.55	73.58	58.16
XB250.100	15.05	143.23	135.00	127.13	119.26	111.39	103.52	95.65	87.78	72.60
XB250.125	16.01	162.24	153.06	144.39	135.73	127.06	118.40	109.74	101.07	86.89
XB250.150	16.97	179.69	169.62	160.26	150.90	141.54	132.18	122.81	113.45	100.89
XB400.000	15.28	96.53	88.92	81.52	74.12	66.71	59.31	44.71	32.85	25.15
XB400.025	16.24	137.84	127.84	118.21	108.59	98.96	89.34	76.87	56.48	43.24
XB400.050	17.20	176.62	164.50	152.98	141.46	129.94	118.42	106.90	82.77	63.37
XB400.075	18.16	213.10	199.06	185.87	172.68	159.50	146.31	133.12	110.75	84.79
XB400.100	19.12	247.44	231.61	216.94	202.27	187.60	172.93	158.25	139.79	107.03
XB400.125	20.08	279.75	262.24	246.24	230.24	214.23	198.23	182.23	166.23	129.73
XB400.150	21.04	310.09	291.02	273.82	256.62	239.42	222.22	205.03	187.83	152.65
XB550.000	19.35	160.16	146.29	132.97	119.64	106.32	90.46	62.82	46.15	35.34
XB550.025	20.31	215.99	198.82	182.53	166.24	149.96	133.67	102.87	75.58	57.86
XB550.050	21.27	268.87	248.75	229.91	211.07	192.22	173.38	147.94	108.69	83.21
XB550.075	22.23	319.05	296.24	275.13	254.02	232.91	211.80	190.69	144.46	110.60
XB550.100	23.19	366.70	341.36	318.22	295.08	271.94	248.80	225.66	182.16	139.47
XB550.125	24.15	411.92	384.22	359.24	334.27	309.29	284.32	259.34	221.24	169.39
XB550.150	25.11	454.82	424.88	398.24	371.60	344.96	318.32	291.69	261.28	200.04

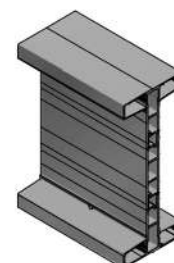
4.5 - 7.5m spans

Member	kg/m	φM	Effective unbraced length in metres (m)							
			4.5	5.0	5.5	6.0	6.5	7.0	7.5	-
XB250.000	11.21	49.69	13.00	10.53	8.70	7.31	6.23	5.37	4.68	
XB250.025	12.17	75.98	23.49	19.03	15.73	13.21	11.26	9.71	8.46	
XB250.050	13.13	100.20	34.58	28.01	23.15	19.45	16.57	14.29	12.45	
XB250.075	14.09	122.58	45.95	37.22	30.76	25.85	22.03	18.99	16.54	
XB250.100	15.05	143.23	57.37	46.47	38.40	32.27	27.50	23.71	20.65	
XB250.125	16.01	162.24	68.66	55.61	45.96	38.62	32.91	28.37	24.72	
XB250.150	16.97	179.69	79.72	64.57	53.36	44.84	38.21	32.94	28.70	
XB400.000	15.28	96.53	19.87	16.09	13.30	11.18	9.52	8.21	7.15	
XB400.025	16.24	137.84	34.17	27.67	22.87	19.22	16.38	14.12	12.30	
XB400.050	17.20	176.62	50.07	40.56	33.52	28.16	24.00	20.69	18.02	
XB400.075	18.16	213.10	67.00	54.27	44.85	37.69	32.11	27.69	24.12	
XB400.100	19.12	247.44	84.57	68.50	56.61	47.57	40.53	34.95	30.44	
XB400.125	20.08	279.75	102.50	83.03	68.62	57.66	49.13	42.36	36.90	
XB400.150	21.04	310.09	120.62	97.70	80.74	67.85	57.81	49.85	43.42	
XB550.000	19.35	160.16	27.92	22.62	18.69	15.71	13.38	11.54	10.05	
XB550.025	20.31	215.99	45.72	37.03	30.61	25.72	21.91	18.89	16.46	
XB550.050	21.27	268.87	65.75	53.26	44.01	36.98	31.51	27.17	23.67	
XB550.075	22.23	319.05	87.39	70.79	58.50	49.16	41.89	36.12	31.46	
XB550.100	23.19	366.70	110.20	89.26	73.77	61.99	52.82	45.54	39.67	
XB550.125	24.15	411.92	133.84	108.41	89.59	75.28	64.15	55.31	48.18	
XB550.150	25.11	454.82	158.06	128.03	105.81	88.91	75.76	65.32	56.90	

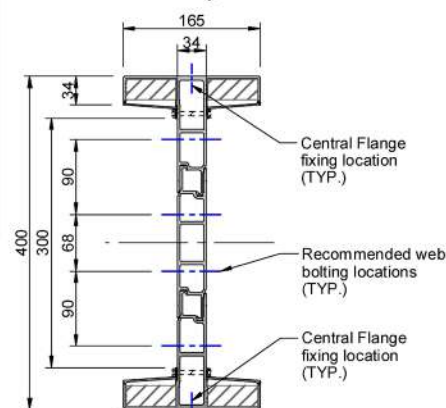


XB250

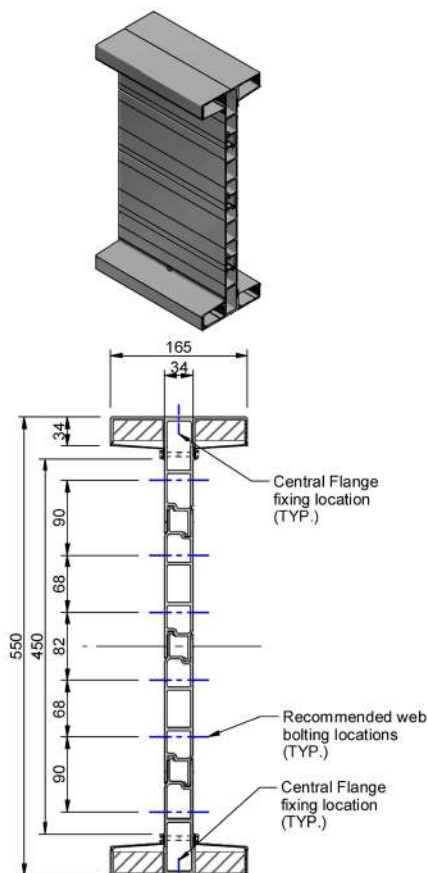
XB250 - SECTIONAL PROPERTIES & LIMITS											
CODE	EI _{vert.} (Mpa.mm ⁴)	Vertical NA Shift (mm) **	Vert. BM (kNm)	Vert. Shear (kN)	EI _{horiz.} (Mpa.mm ⁴)	Horizontal NA	Horiz. BM (kNm)	Horiz. Shear (kN)	Mass (kg/m)	Z _x *** (mm ³)	Z _y *** (mm ³)
XB250.250	1.21E+13	4.81	251.1	70	2.60E+12	2.17	99.9	84.3	20.81	1.33E+06	4.38E+05
XB250.225	1.13E+13	4.74	238.8	70	2.38E+12	2.12	91.2	83.8	19.85	1.24E+06	4.00E+05
XB250.200	1.04E+13	4.65	225.1	70	2.15E+12	2.05	82.5	83.2	18.89	1.15E+06	3.62E+05
XB250.175	9.56E+12	4.52	209.8	70	1.92E+12	1.97	73.76	82.0	17.93	1.05E+06	3.25E+05
XB250.150	8.64E+12	4.35	193.0	70	1.70E+12	1.88	65.1	80.6	16.97	9.54E+05	2.87E+05
XB250.125	7.67E+12	4.12	174.5	70	1.47E+12	1.76	56.3	75.2	16.01	8.48E+05	2.48E+05
XB250.100	6.65E+12	3.8	154.2	70	1.24E+12	1.61	47.6	69.7	15.05	7.38E+05	2.10E+05
XB250.075	5.59E+12	3.36	132.2	70	1.01E+12	1.40	38.9	64.6	14.09	6.22E+05	1.72E+05
XB250.050	4.48E+12	2.71	108.2	70	7.86E+11	1.12	30.2	59.3	13.13	5.01E+05	1.34E+05
XB250.025	3.32E+12	1.71	82.1	70	5.59E+11	0.7	21.5	56.5	12.17	3.75E+05	9.60E+04
XB250.000	2.12E+12	0.00	53.7	70	3.32E+11	0.00	12.8	53.6	11.21	2.42E+05	5.75E+04



XB400 - SECTIONAL PROPERTIES & LIMITS											
CODE	EI _{vert.} (Mpa.mm ⁴)	Vertical NA Shift (mm) **	Vert. BM (kNm)	Vert. Shear (kN)	EI _{horiz.} (Mpa.mm ⁴)	Horizontal NA	Horiz. BM (kNm)	Horiz. Shear (kN)	Mass (kg/m)	Z _x *** (mm ³)	Z _y *** (mm ³)
XB400.250	3.52E+13	7.40	371.6	130	2.62E+12	1.98	100.6	85.5	24.88	2.42E+06	4.43E+05
XB400.225	3.27E+13	7.21	352.1	130	2.39E+12	1.91	91.9	84.9	23.92	2.25E+06	4.05E+05
XB400.200	3.01E+13	6.97	330.8	130	2.16E+12	1.84	83.2	84.2	22.96	2.08E+06	3.67E+05
XB400.175	2.75E+13	6.69	307.8	130	1.94E+12	1.75	74.5	82.5	22.00	1.90E+06	3.29E+05
XB400.150	2.48E+13	6.33	283.1	130	1.71E+12	1.65	65.8	80.7	21.04	1.72E+06	2.90E+05
XB400.125	2.20E+13	5.88	256.4	130	1.48E+12	1.52	57.1	75.5	20.08	1.53E+06	2.52E+05
XB400.100	1.91E+13	5.30	227.8	130	1.26E+12	1.36	48.4	70.2	19.12	1.33E+06	2.14E+05
XB400.075	1.62E+13	4.55	197.1	130	1.03E+12	1.16	39.6	65.2	18.16	1.13E+06	1.76E+05
XB400.050	1.32E+13	3.53	164.3	130	8.04E+11	0.90	30.9	60.1	17.20	9.25E+05	1.38E+05
XB400.025	1.01E+13	2.11	129.1	130	5.78E+11	0.53	22.2	58.4	16.24	7.12E+05	9.94E+04
XB400.000	6.90E+12	0.00	91.1	130	3.50E+11	0.00	13.5	56.6	15.28	4.93E+05	6.07E+04



XB400



XB550

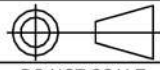
XB550 - SECTIONAL PROPERTIES & LIMITS											
CODE	EI _{vert.} (Mpa.mm ⁴)	Vertical NA Shift (mm) **	Vert. BM (kNm)	Vert. Shear (kN)	EI _{horiz.} (Mpa.mm ⁴)	Horizontal NA	Horiz. BM (kNm)	Horiz. Shear (kN)	Mass (kg/m)	Z _x *** (mm ³)	Z _y *** (mm ³)
XB550.250	7.18E+13	9.57	472.1	180	2.64E+12	1.82	101.5	86.7	28.95	3.60E+06	4.47E+05
XB550.225	6.66E+13	9.25	447.0	180	2.41E+12	1.75	92.8	86.0	27.99	3.35E+06	4.09E+05
XB550.200	6.14E+13	8.87	420.0	180	2.19E+12	1.67	84.1	85.2	27.03	3.09E+06	3.71E+05
XB550.175	5.61E+13	8.41	391.2	180	1.96E+12	1.58	75.4	83.0	26.07	2.83E+06	3.33E+05
XB550.150	5.07E+13	7.87	360.3	180	1.73E+12	1.47	66.6	80.8	25.11	2.56E+06	2.95E+05
XB550.125	4.51E+13	7.21	327.4	180	1.51E+12	1.34	57.9	75.8	24.15	2.29E+06	2.57E+05
XB550.100	3.95E+13	6.40	292.4	180	1.28E+12	1.18	49.2	70.7	23.19	2.01E+06	2.19E+05
XB550.075	3.37E+13	5.38	255.1	180	1.05E+12	0.99	40.5	65.8	22.23	1.72E+06	1.80E+05
XB550.050	2.79E+13	4.08	215.5	180	8.27E+11	0.75	31.8	60.9	21.27	1.43E+06	1.42E+05
XB550.025	2.19E+13	2.36	173.4	180	6.00E+11	0.43	23.1	60.3	20.31	1.13E+06	1.03E+05
XB550.000	1.58E+13	0.00	128.5	180	3.73E+11	0.00	14.3	59.6	19.35	8.21E+05	6.46E+04

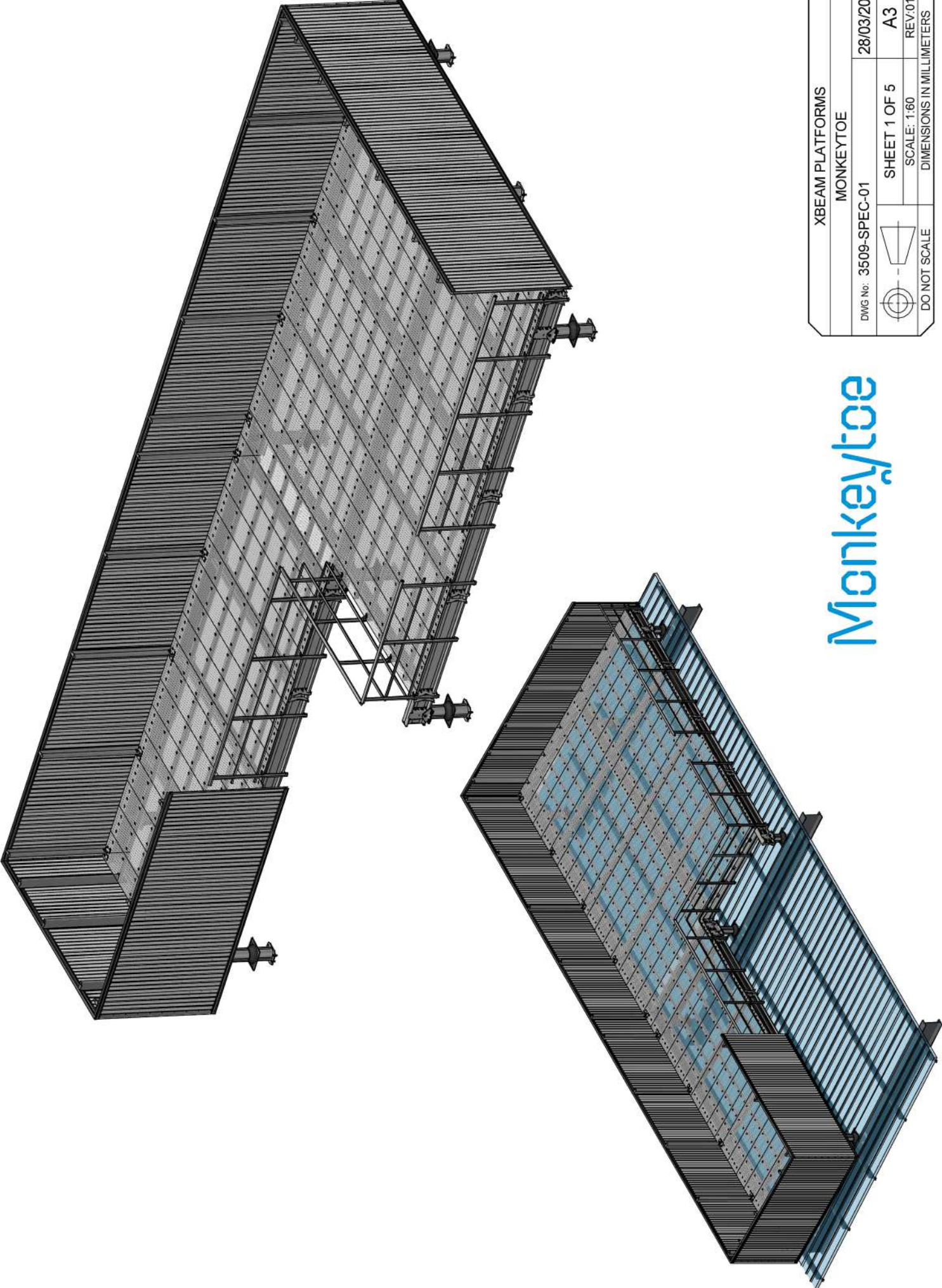
NOTES:

1. EI = Material modulus x Section Moment of Inertia (Given in this format due to the use of multiple materials). For transformed Aluminium equivalent, divide by 70000.
2. ** Neutral Axis Shift: Due to the differing compressive and tensile moduli of Carbon Fiber, as the proportion used increases the beam neutral axis will shift further towards the tensile side. The shift measurement shown is from the centre line of the beam.
3. *** Z_x & Z_y Elastic section modulus based on Aluminium transformed properties where E = 70GPa.
4. Beams can be tailored along their length using a combination of the above sections as required. (Typically stepped in 200mm Increments)

Aluminium Grade: **6005-T5**
 F_{tu}: **262 MPa** F_{ty}: **241 MPa**
 F_{cy}: **241 MPa**
 F_{su}: **165 MPa** F_{sy}: **138 MPa**
 F_{bu}: **552 MPa** F_{by}: **386 MPa**
 E: **70000 MPa**

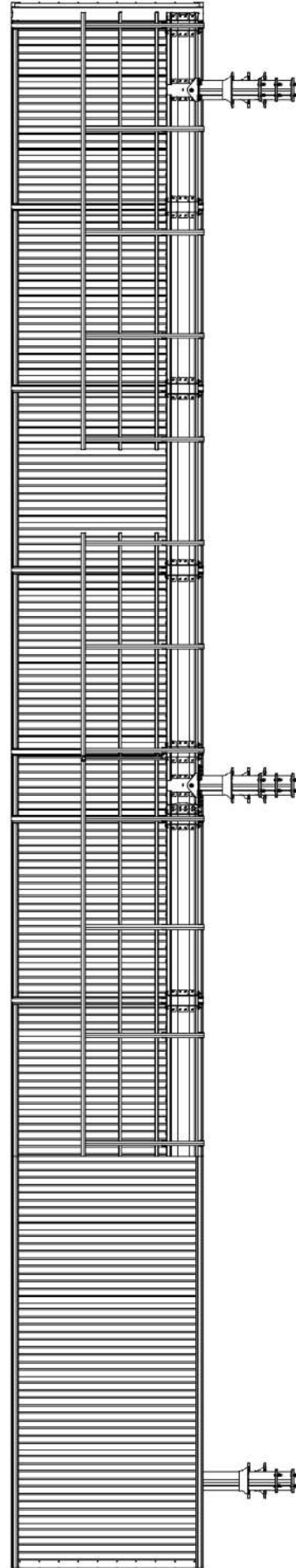
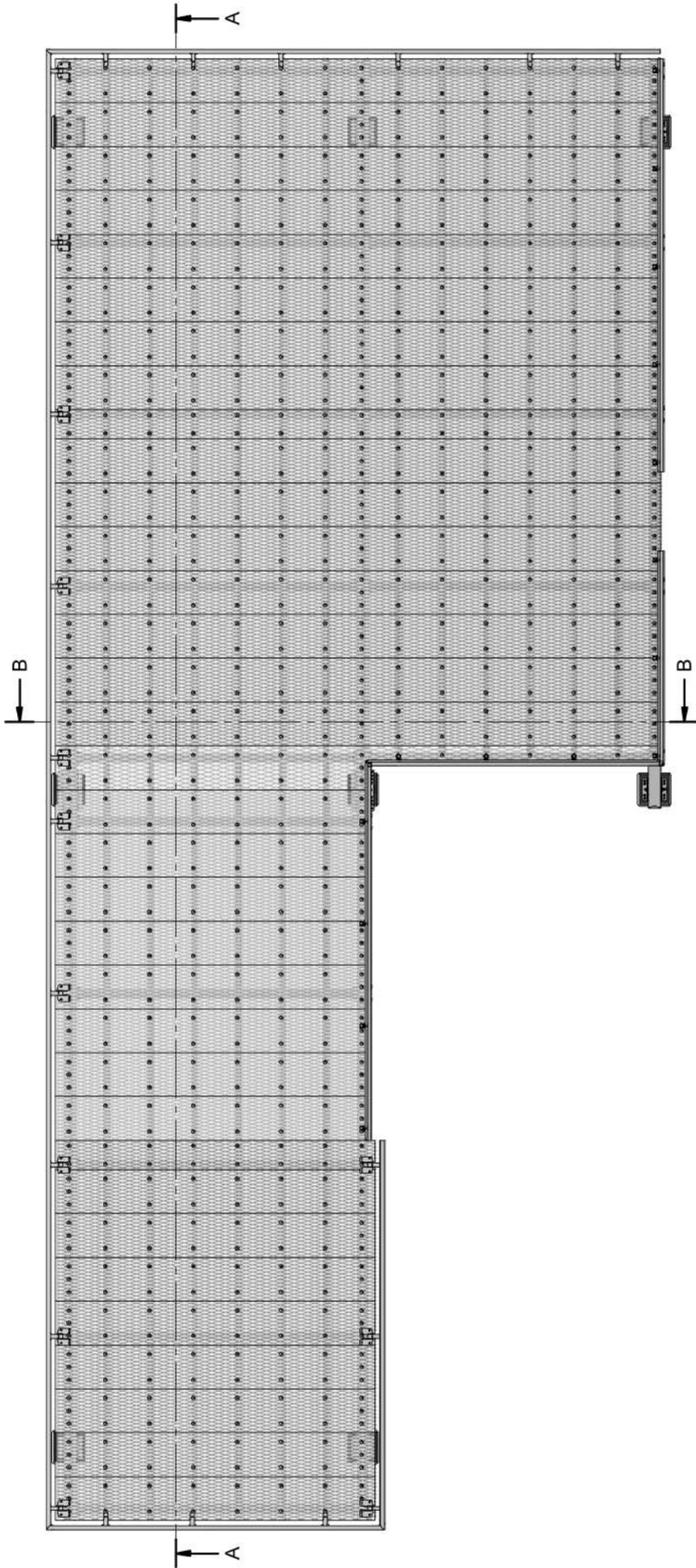
Monkeytoe

SECTIONAL PROPERTIES & LIMITS		
MONKEYTOE - XBEAM V1		
DWG No: XBEAM-SPL-01	26/05/2021	
	SHEET 1 OF 1	A3
DO NOT SCALE	SCALE: 1:2	REV:04
DIMENSIONS IN MILLIMETERS		



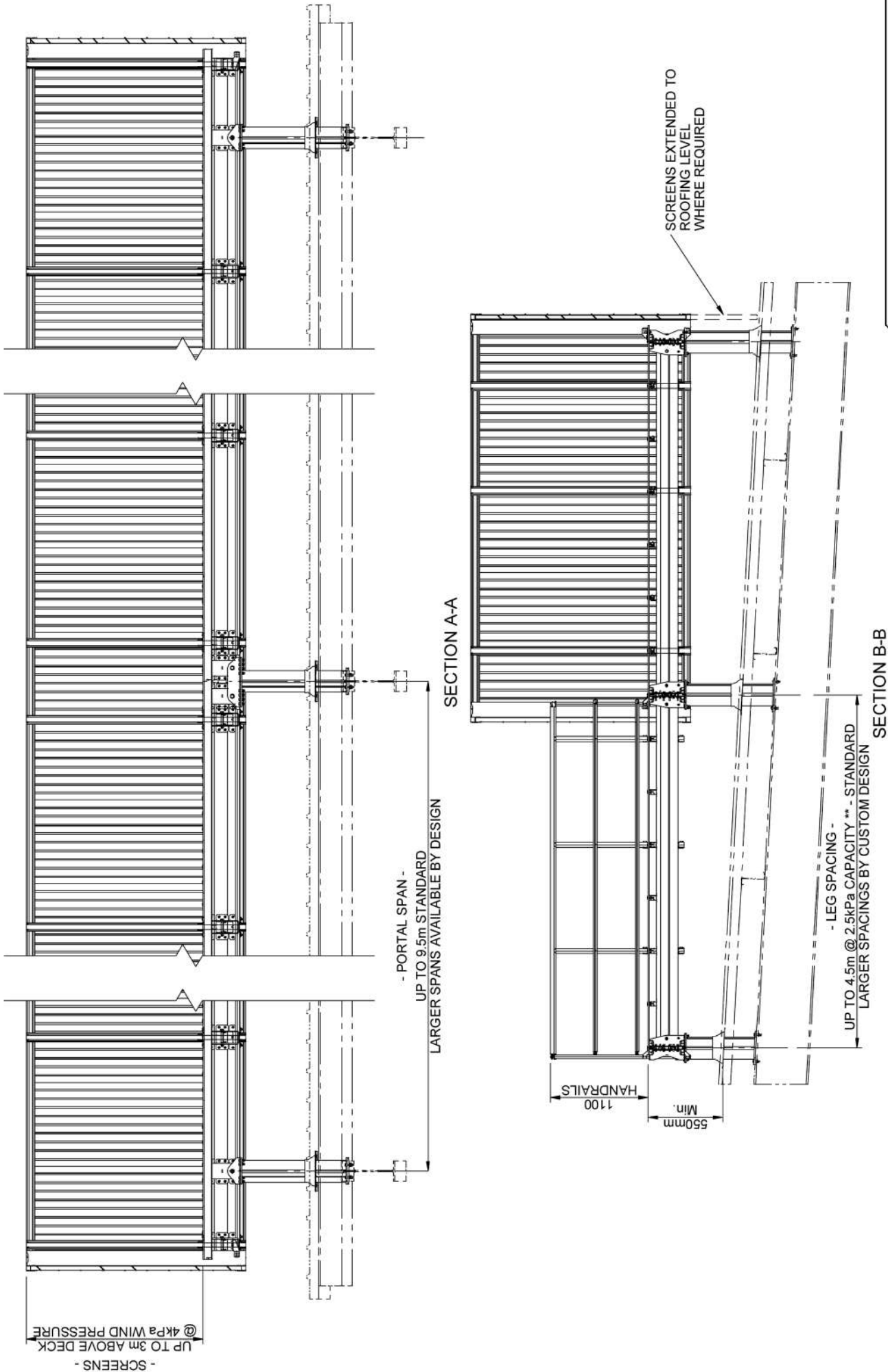
XBEAM PLATFORMS		28/03/2020	A3	
MONKEYTOE			REV/01	
DWG No: 3509-SPEC-01		SHEET 1 OF 5	SCALE: 1:60	DIMENSIONS IN MILLIMETERS
DO NOT SCALE				

Monkeytoe



XBEAM PLATFORMS		
MONKEYTOE		
DWG No: 3509-SPEC-01		28/03/2020
	SHEET 2 OF 5	A3
	SCALE: 1:55	REV/01
DO NOT SCALE	DIMENSIONS IN MILLIMETERS	

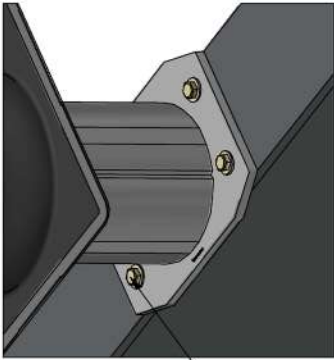
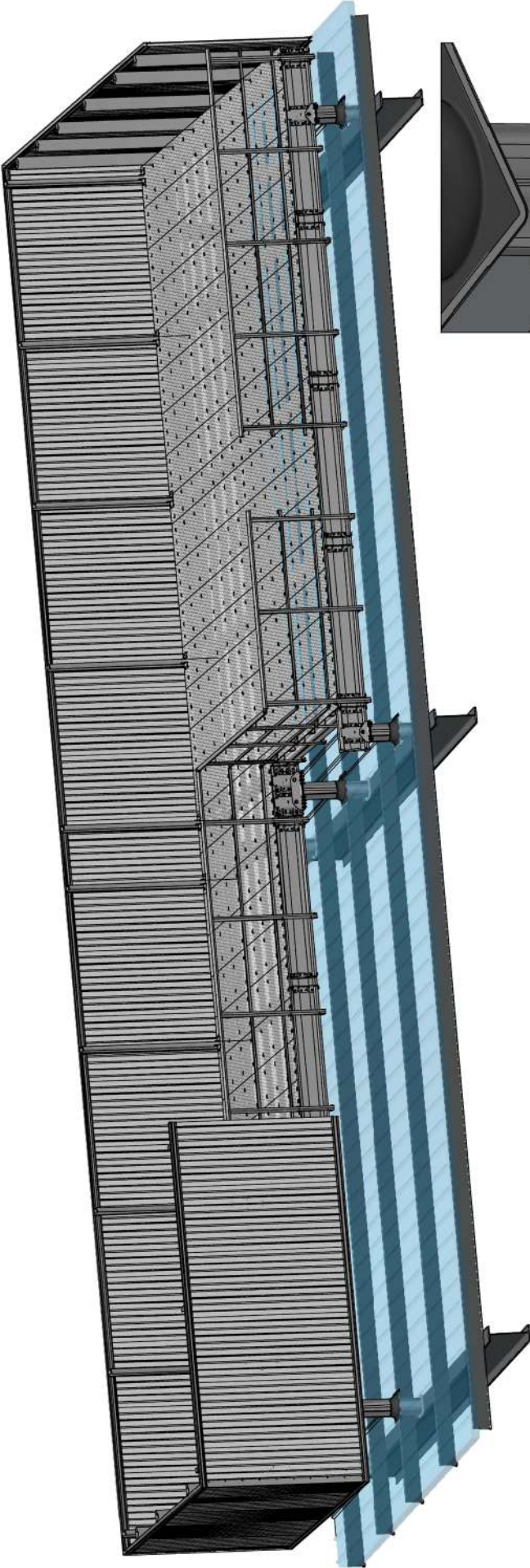
Monkeytoe



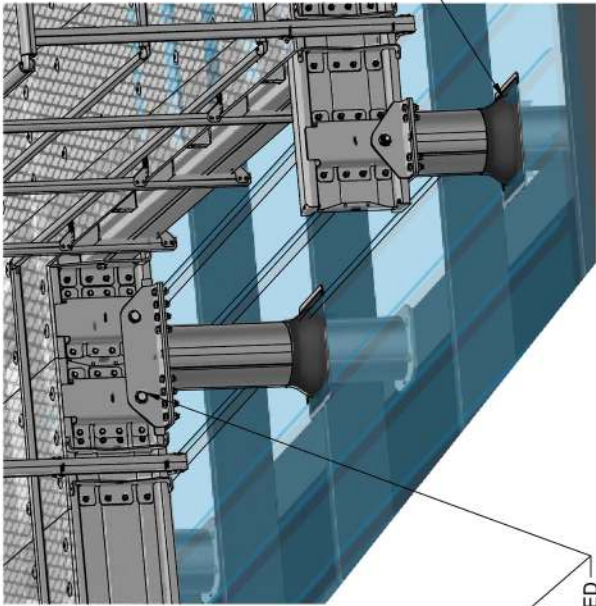
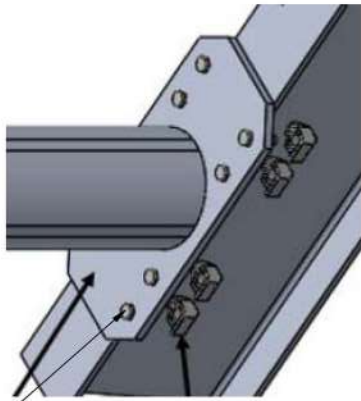
NOTE** - LEG SPACINGS ARE HEAVILY INFLUENCED BY PLATFORM CAPACITY (2.5 / 3 / 4 / 5kPa), SEISMIC ZONE & WIND LOADING. CONTACT YOUR MONKEYTOE REP FOR FURTHER DETAILS.

Monkeytoe

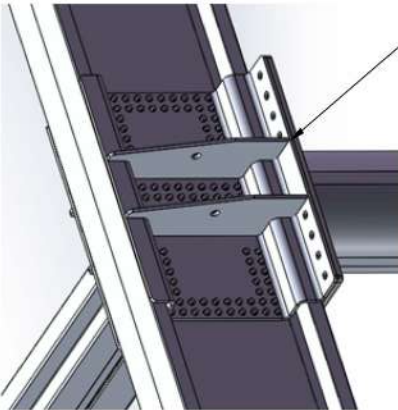
XBEAM PLATFORMS		MONKEYTOE	
DWG No: 3509-SPEC-01	28/03/2020	SHEET 3 OF 5	
DO NOT SCALE		SCALE: 1:1	REV/01
		DIMENSIONS IN MILLIMETERS	



THRU BOLT &
BEAM CLAMP FIXING
OPTIONS AVAILABLE
TO BUILDING PORTALS



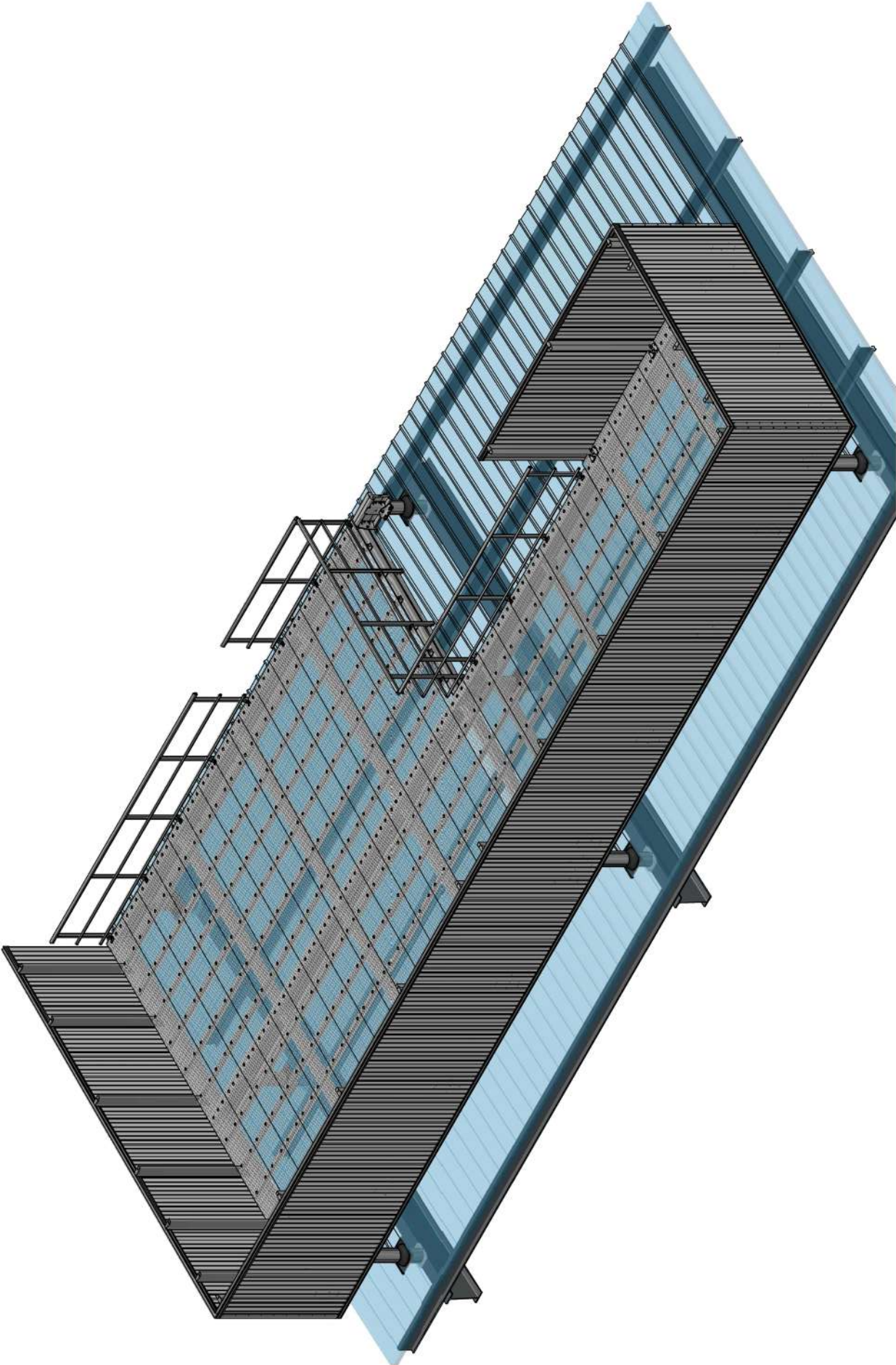
DEKITE #7
FLASHING BOOT.
SUPPLIED BY MONKEYTOE
INSTALLED BY ROOFING
CONTRACTOR



PINNED / FIXED, BRACED / UNBRACED
CONNECTION OPTIONS AVAILABLE TO
SUIT ALL APPLICATIONS

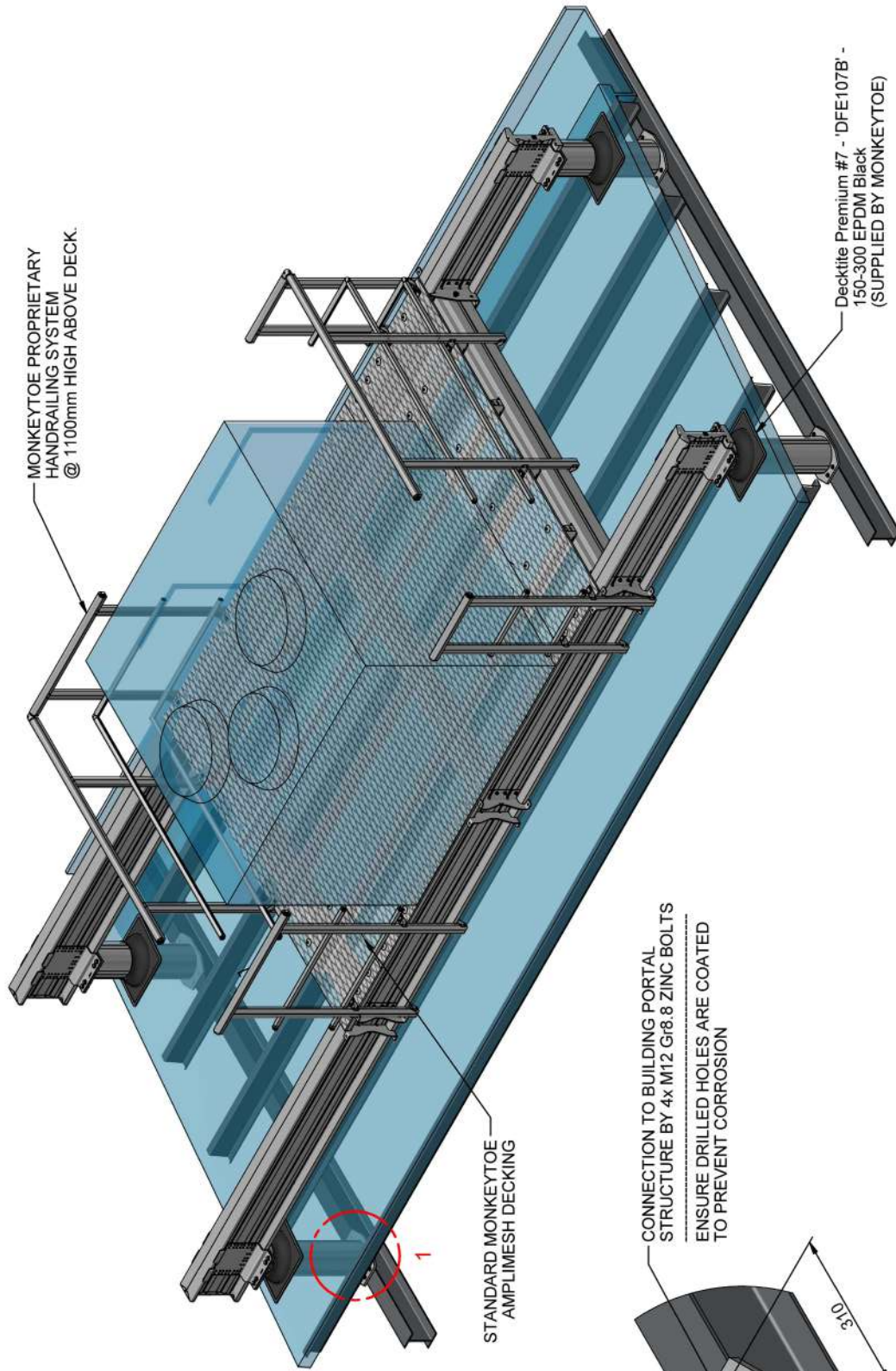
Monkeytoe

XBEAM PLATFORMS		MONKEYTOE	
DWG No: 3509-SPEC-01	28/03/2020	SHEET 4 OF 5	
DO NOT SCALE		SCALE: 1:60	REV/01
DIMENSIONS IN MILLIMETERS		A3	

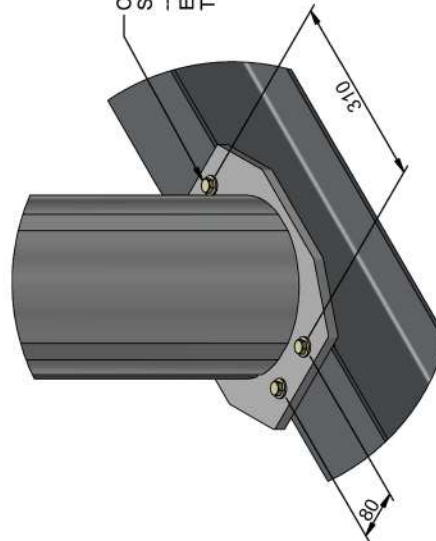


XBEAM PLATFORMS		28/03/2020	
MONKEYTOE		A3	
DWG No: 3509-SPEC-01	SHEET 5 OF 5	SCALE: 1:60	REV/01
DO NOT SCALE		DIMENSIONS IN MILLIMETERS	


Monkeytoe



CONNECTION TO BUILDING PORTAL
STRUCTURE BY 4x M12 Gr8.8 ZINC BOLTS
ENSURE DRILLED HOLES ARE COATED
TO PREVENT CORROSION



DETAIL 1

Single Unit Platform With Handrails	
XBEAM Platform	
DWG No: 22836-GA-01	22836
	SHEET 1 OF 1
	A3
DO NOT SCALE	SCALE: 1:30
DIMENSIONS IN MILLIMETERS	

Monkeytoe